

# PARTS DEPARTMENT BULLETIN

DATE: 9 MARCH 2004 BULLETIN NUMBER: 2004-1  
TO: ALL MASTER DISTRIBUTORS AND WESTERBEKE/UNIVERSAL DEALERS  
SUBJECT: RAW/SEA WATER PUMP #033636

PLEASE BE ADVISED THAT PRODUCTION OF PUMP #033636 HAS STOPPED. THIS PUMP IS NOW NO LONGER AVAILABLE.

PUMP #048080 WILL DIRECTLY REPLACE PUMP #033636.

THIS NEW PUMP WILL START TO BE USED ON PRODUCT MANUFACTURED THIS MONTH (MARCH 2004) ON.

ON THE **BACK** OF THIS PARTS BULLETIN IS A COMPONENT BREAK DOWN OF THIS NEW PUMP.

**NOTE:** PUMP REPAIR KIT #049000 IS MADE UP OF KEY NO. 2 THRU 6 & 8 THRU 18 AND ALSO INCLUDES MOUNTING GASKET #030326.

ORDERS FOR PUMP #033636 WILL HAVE THE NEW PUMP #048080 SUPPLIED IN ITS PLACE.

INDIVIDUAL PARTS AND REPAIR KITS FOR THE #033636 PUMP ARE STILL AVAILABLE.

**NOTE:** PUMP KIT #037431 WILL HAVE THE NEW PUMP #048080 IN THE KIT ALONG WITH A MOUNTING GASKET AND FITTINGS.

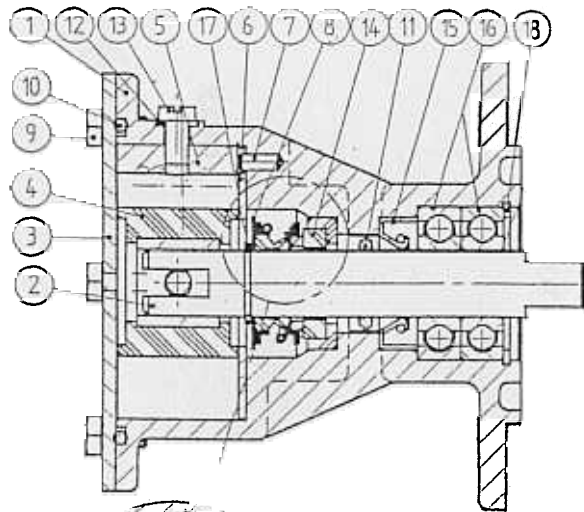
**NOTE:** ALL SPARE PARTS "B" KITS SUPPLIED WITH REPAIR KIT #034466 FOR PUMP #033636 WILL HAVE THIS REPAIR KIT REMOVED AND THE #049000 REPAIR KIT FOR THE NEW PUMP #048080 WILL BE SUPPLIED IN THE "B" KITS STARTING 1 MAY 2004.

PLEASE ENSURE THAT COPIES OF THIS PARTS BULLETIN ARE SUPPLIED TO ALL OF YOUR SERVICE/SELLING DEALERS.

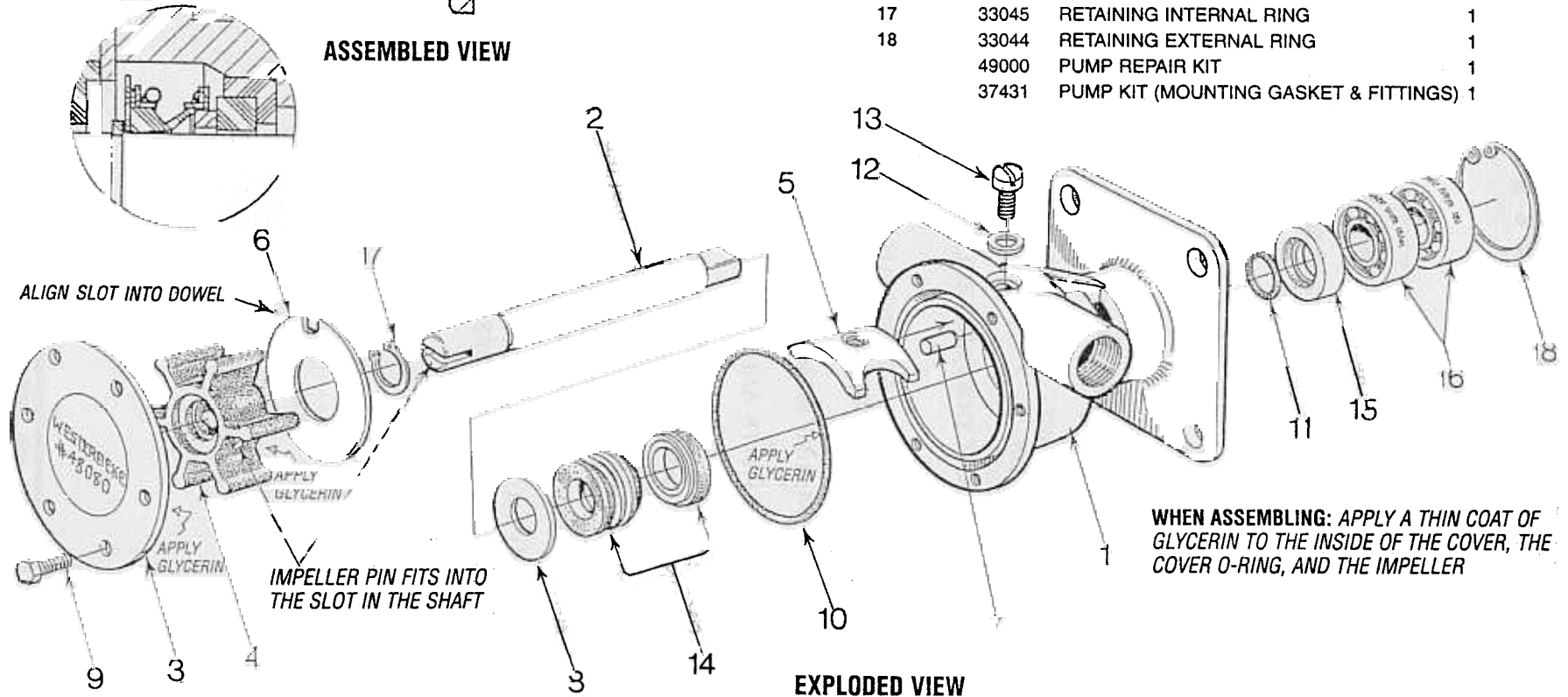
OVER



# WESTERBEKE RAW WATER PUMP (PN.48080) PARTS LIST



**ASSEMBLED VIEW**



KEY NO.	PART NUMBER AND PART NAME	QUANTITY
1	48080 RAW WATER PUMP	1
2	49172 SHAFT	1
3	49170 IMPELLER COVER	1
4	48500 IMPELLER KIT (O-RING & GLYCERIN)	1
5	34458 CAM	1
6	49171 WEAR PLATE	1
7	302575 DOWEL	1
8	48253 SPRING SEAL WASHER	1
9	34463 IMPELLER COVER SCREW	6
10	48359 IMPELLER COVER O-RING	1
11	33041 O-RING	1
12	33037 CAM WASHER	1
13	46662 CAM SCREW	1
14	48254 SPRING SEAL	1
15	49169 LIP SEAL	1
16	34464 BALL BEARING	2
17	33045 RETAINING INTERNAL RING	1
18	33044 RETAINING EXTERNAL RING	1
	49000 PUMP REPAIR KIT	1
	37431 PUMP KIT (MOUNTING GASKET & FITTINGS)	1