

PARTS DEPARTMENT BULLETIN

DATE: 18 APRIL 2006 **BULLETIN NUMBER:** 2006-4
TO: ALL MASTER DISTRIBUTORS AND WESTERBEKE/UNIVERSAL DEALERS
SUBJECT: PARTS LIST #036776 EDITION ONE DTD FEBRUARY 1990

A CHANGE HAS TAKEN PLACE AFFECTING THE CYLINDER HEAD ASSEMBLY USED ON THE MODELS 42B/FOUR PROPULSION ENGINE AND THE 12.5/9.4BTDA GENERATOR DRIVE ENGINE.

THIS CHANGE AFFECTS THE INTAKE AND EXHAUST VALVES. THE DIAMTER OF THE VALVE HEAD HAS BEEN INCREASED. THE CYLINDER HEAD ALSO HAS CHANGED TO ACCEPT THE LARGER DIAMETER VALVES.

THIS CHANGE AFFECTS ENGINE SERIAL NUMBERS 9440 AND HIGHER.

| | | |
|-----------------|---|-----------------------------|
| VALVE DIAMETER: | INTAKE VALVE (OLD 26.2MM) (PN#030508) | (NEW 31.2MM) (PN#038931) |
| | EXHAUST VALVE (OLD 24.2MM) (PN#030510) | (NEW 26.2MM) (PN#038932) |

CYLINDER HEAD: OLD PN#037675 NEW PN#038930

ATTACHED ARE REVISED PARTS LIST PAGES 103/104 AND 109/110 THAT REFLECT THIS VALVE AND CYLINDER HEAD CHANGE.

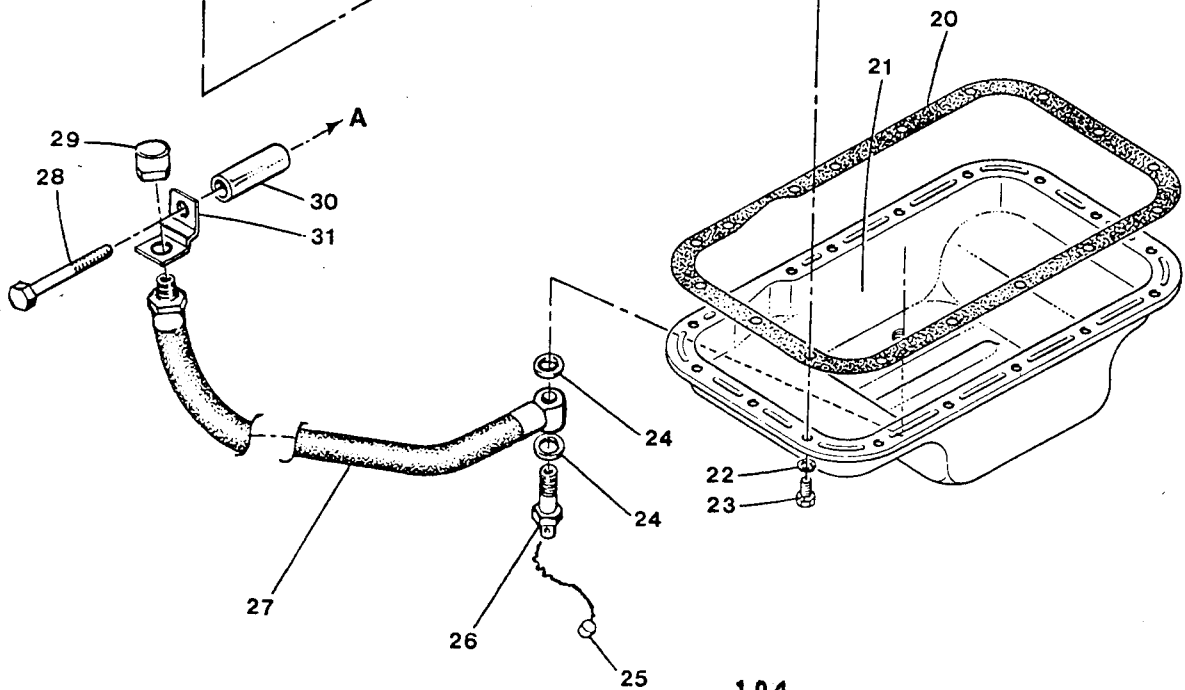
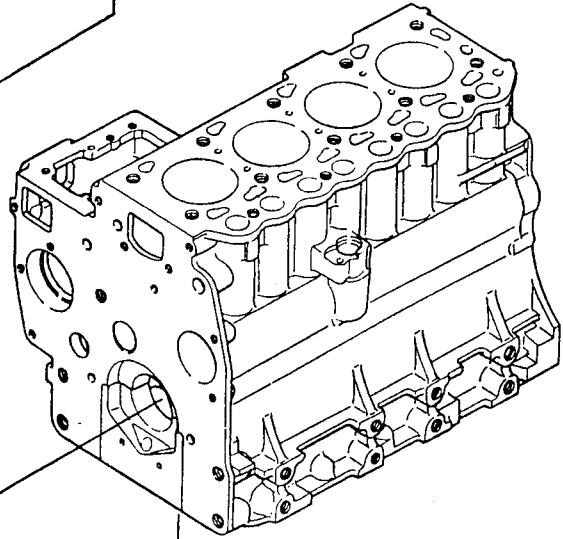
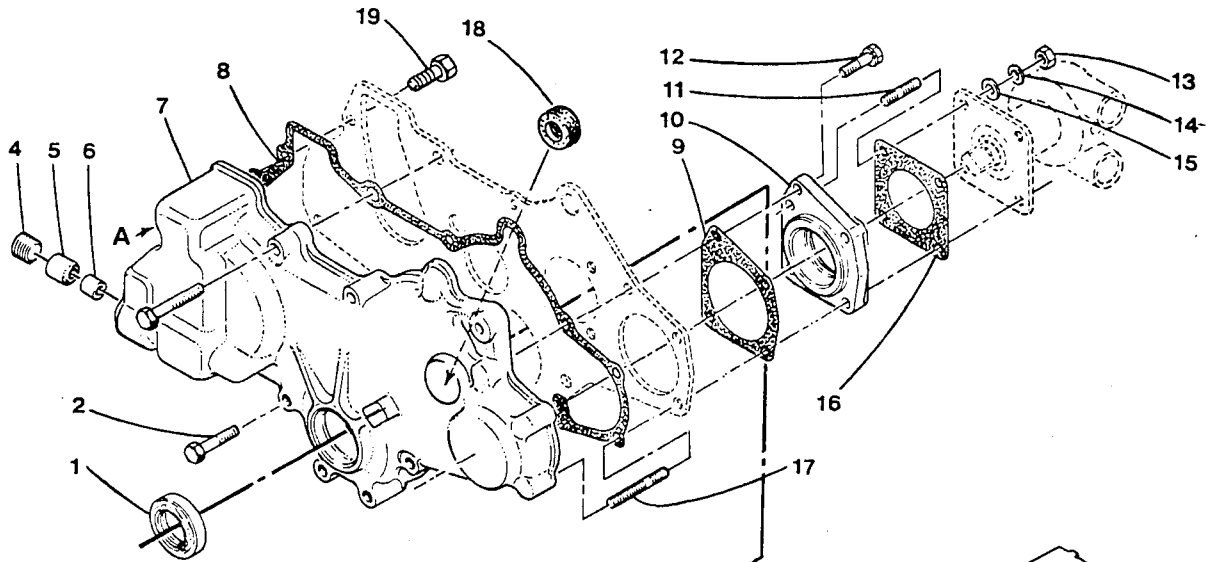
REMOVE EXISTING PAGES 103/104 AND 109/110 FROM YOUR PARTS LIST AND INSERT THESE NEW REVISED PAGES. FUTURE PARTS LIST PRINTINGS WILL REFLECT THESE CHANGES.

 **WESTERBEKE**
WESTERBEKE CORPORATION
MYLES STANDISH INDUSTRIAL PARK, 150 JOHN HANCOCK ROAD
TAUNTON, MA 02780-7319 • TEL. 1-508-823-7677

35B - 38B - 42B - 10.0 BTD - 11.0 BTD - 12.5 BTDA - CYLINDER HEAD

| REF | PN | NAME | REMARKS | QUAN |
|------|--------|------------|---|------|
| 1 | 018242 | NUT | M 8 DIN 934 4 CYLINDER | 2 |
| 2 | 030517 | WASHER | 4 CYLINDER | 2 |
| 3 | 030780 | SEAL | OIL-ROCKER COVER STUD 4 CYLINDER | 2 |
| 4 | 030237 | CAP | OIL FILLER 4 CYLINDER | 1 |
| 5 | 030514 | COVER | ROCKER INCL REF 6 4 CYLINDER | 1 |
| 6 | 030219 | CONNECTOR | BREATHER HOSE TO COVER | 1 |
| 7 | 030516 | GASKET | ROCKER COVER 4 CYLINDER | 1 |
| 8-1 | 030506 | GUIDE | VALVE 3 CYLINDER | 6 |
| 8-2 | 030506 | GUIDE | VALVE 4 CYLINDER | 8 |
| 9-1 | 024373 | PLUG | EXPANSION-25 3 CYLINDER | 3 |
| 9-2 | 024373 | PLUG | EXPANSION-25 4 CYLINDER | 4 |
| 10-1 | 030512 | BOLT | CYLINDER HEAD-LONG 3 CYLINDER | 8 |
| 10-2 | 030512 | BOLT | CYLINDER HEAD-LONG 4 CYLINDER | 10 |
| 11-1 | 030243 | WASHER | HEAD BOLT 3 CYLINDER | 8 |
| 11-2 | 030243 | WASHER | HEAD BOLT 4 CYLINDER | 10 |
| 12-1 | 030383 | BOLT | CYLINDER HEAD-SHORT 3 CYLINDER | 3 |
| 12-2 | 030383 | BOLT | CYLINDER HEAD-SHORT 4 CYLINDER | 4 |
| 13 | 030717 | PLUG | EXPANSION-45 | 1 |
| 14 | 030711 | PLUG | 1/8 | 1 |
| 15-1 | 037676 | HEAD | CYLINDER INCL REF 8-9-13 35B, 10.0 BTD | 1 |
| 15-2 | 037674 | HEAD | CYLINDER INCL REF 8-9-13 38B, 11.0 BTD | 1 |
| 15-3 | 037675 | HEAD | CYLINDER INCL REF 8-9-13 42B, 12.5BTDA TO SERIAL NUMBER 9439 | 1 |
| 15-4 | 038930 | HEAD | CYLINDER INCL REF 8-9-13 42B, 12.5BTDA FROM SERIAL NUMBER 9440 - up. | 1 |
| 16-1 | 030131 | EYE | LIFTING GENSET FRONT AND REAR | 2 |
| 16-2 | 030131 | EYE | LIFTING PROPULSION FRONT | 1 |
| 17 | 019262 | LOCKWASHER | M10 DIN 127 | 1 |
| 18 | 024952 | CAPSCREW | M10 X 1.25 X 20 DIN 961 | 1 |
| 19-1 | 037661 | GASKET | CYLINDER HEAD 35B, 10.0 BTD | 1 |
| 19-2 | 030507 | GASKET | CYLINDER HEAD 38B, 11.0 BTD | 1 |
| 19-3 | 044849 | GASKET | CYLINDER HEAD 42B, 12.5BTDA | 1 |
| 20 | 030289 | SEAL | ROCKER COVER CAPSCREW 3 CYLINDER | 2 |
| 21 | 034672 | CAPSCREW | M 8 X 11 DIN 933 3 CYLINDER | 2 |
| 22-1 | 033126 | CAP | OIL FILL INCL O-RING 3 CYLINDER | 1 |
| 22-2 | 033123 | O-RING | | 1 |
| 23 | 037671 | COVER | ROCKER INCL REF 6 3 CYLINDER | 1 |
| 24 | 030515 | GASKET | ROCKER COVER 3 CYLINDER | 1 |

35B - 38B - 42B - 10 BTD - 11 BTD - 12.5 BTDA - TIMING COVER AND SUMP



| REF | PN | NAME | REMARKS | QUAN |
|------|--------|------------|------------------------------------|------|
| 1 | 030279 | SNAPRING | | 2 |
| 2-1 | 031821 | CAPSCREW | M10 X 1.25 X 70 DIN 961 3 CYLINDER | 1 |
| 2-2 | 031821 | CAPSCREW | M10 X 1.25 X 70 DIN 961 4 CYLINDER | 2 |
| 3-1 | 030543 | SHAFT | ROCKER ASSEMBLY 3 CYLINDER | 1 |
| 3-2 | 030544 | SHAFT | ROCKER ASSEMBLY 4 CYLINDER | 1 |
| 4-1 | 030232 | SPRING | ROCKER SHAFT 3 CYLINDER | 2 |
| 4-2 | 030232 | SPRING | ROCKER SHAFT 4 CYLINDER | 3 |
| 5-1 | 031804 | NUT | M10 X 1.25 JAM 3 CYLINDER | 6 |
| 5-2 | 031804 | NUT | M10 X 1.25 JAM 4 CYLINDER | 8 |
| 6-1 | 030438 | ROCKER | ARM 3 CYLINDER | 6 |
| 6-2 | 030438 | ROCKER | ARM 4 CYLINDER | 8 |
| 7-1 | 030195 | SCREW | ADJUSTING 3 CYLINDER | 6 |
| 7-2 | 030195 | SCREW | ADJUSTING 4 CYLINDER | 8 |
| 8-1 | 030542 | PUSHROD | 3 CYLINDER | 6 |
| 8-2 | 030542 | PUSHROD | 4 CYLINDER | 8 |
| 9 | 035800 | CAPSCREW | M 6 X 16 JIS INCL LOCKWASHER | 2 |
| 10 | 030545 | STUD | BRACKET AND COVER | 2 |
| 11 | 019262 | LOCKWASHER | M10 DIN 127 | 2 |
| 12 | 030440 | WASHER | | 2 |
| 13 | 030299 | BRACKET | ROCKER SHAFT 3 CYLINDER | 3 |
| 13-2 | 030299 | BRACKET | ROCKER SHAFT 4 CYLINDER | 4 |
| 14-1 | 030241 | LOCK | VALVE 3 CYLINDER | 12 |
| 14-2 | 030241 | LOCK | VALVE 4 CYLINDER | 16 |
| 15-1 | 030240 | SEAT | VALVE SPRING UPPER 3 CYLINDER | 6 |
| 15-2 | 030240 | SEAT | VALVE SPRING UPPER 4 CYLINDER | 8 |
| 16-1 | 030346 | SPRING | VALVE 3 CYLINDER | 6 |
| 16-2 | 030346 | SPRING | VALVE 4 CYLINDER | 8 |
| 17-1 | 030242 | SEAL | OIL 3 CYLINDER | 6 |
| 17-2 | 030242 | SEAL | OIL 4 CYLINDER | 8 |
| 18-1 | 037654 | SEAT | VALVE SPRING LOWER 3 CYLINDER | 6 |
| 18-2 | 037654 | SEAT | VALVE SPRING LOWER 4 CYLINDER | 8 |
| 19-1 | 030510 | VALVE | EXHAUST 3 CYLINDER (24.2MM DIA) | 3 |
| 19-2 | 038932 | VALVE | EXHAUST 3 CYLINDER (26.2MM DIA) | 3 |
| 19-3 | 030510 | VALVE | EXHAUST 4 CYLINDER (24.2MM DIA) | 4 |
| 19-4 | 038932 | VALVE | EXHAUST 4 CYLINDER (26.2MM DIA) | 4 |
| 20-1 | 030361 | TAPPET | 3 CYLINDER | 6 |
| 20-2 | 030361 | TAPPET | 4 CYLINDER | 8 |
| 21-1 | 030508 | VALVE | INTAKE 3 CYLINDER (26.2MM DIA) | 3 |
| 21-2 | 038931 | VALVE | INTAKE 3 CYLINDER (31.2MM DIA) | 3 |
| 21-3 | 030508 | VALVE | INTAKE 4 CYLINDER (26.2MM DIA) | 4 |
| 21-4 | 038931 | VALVE | INTAKE 4 CYLINDER (31.2MM DIA) | 4 |
| 22-1 | 030546 | CAMSHAFT | INJECTION PUMP 3 CYLINDER | 1 |
| 22-2 | 030547 | CAMSHAFT | INJECTION PUMP 4 CYLINDER | 1 |
| 23 | 030273 | KEY | GEAR TO SHAFT | 1 |
| 24 | 030434 | BEARING | INJECTION PUMP CAMSHAFT | 1 |
| 25-1 | 031787 | WASHER | M 8 DIN 125 | 1 |
| 25-2 | 031786 | LOCKWASHER | M 8 DIN 127 | 1 |
| 26 | 016789 | CAPSCREW | M 8 X 16 DIN 933 | 1 |
| 27 | 030435 | GEAR | INJECTION PUMP CAMSHAFT | 1 |
| 28 | 030541 | GEAR | IDLER | 1 |
| 29 | 030437 | GEAR | CAMSHAFT | 1 |
| 30 | 030202 | BEARING | PUMP GEAR | 1 |
| 31 | 030590 | GEAR | SEA WATER PUMP DRIVE | 1 |
| 32 | 030198 | BEARING | PUMP GEAR | 1 |
| 33-1 | 037280 | CAMSHAFT | 3 CYLINDER | 1 |
| 33-2 | 037279 | CAMSHAFT | 4 CYLINDER | 1 |
| 34 | 030275 | KEY | GEAR TO CAMSHAFT | 1 |

