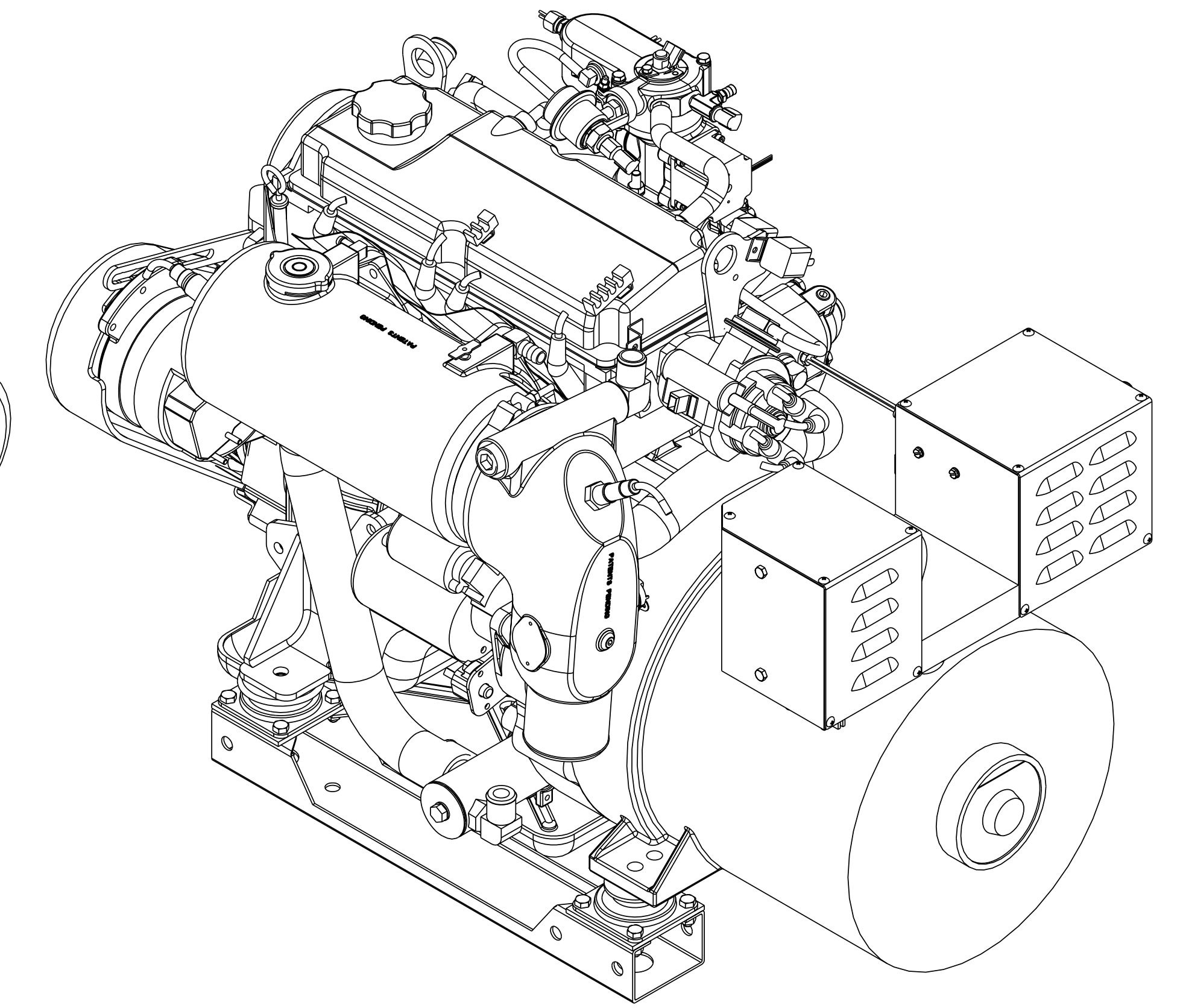
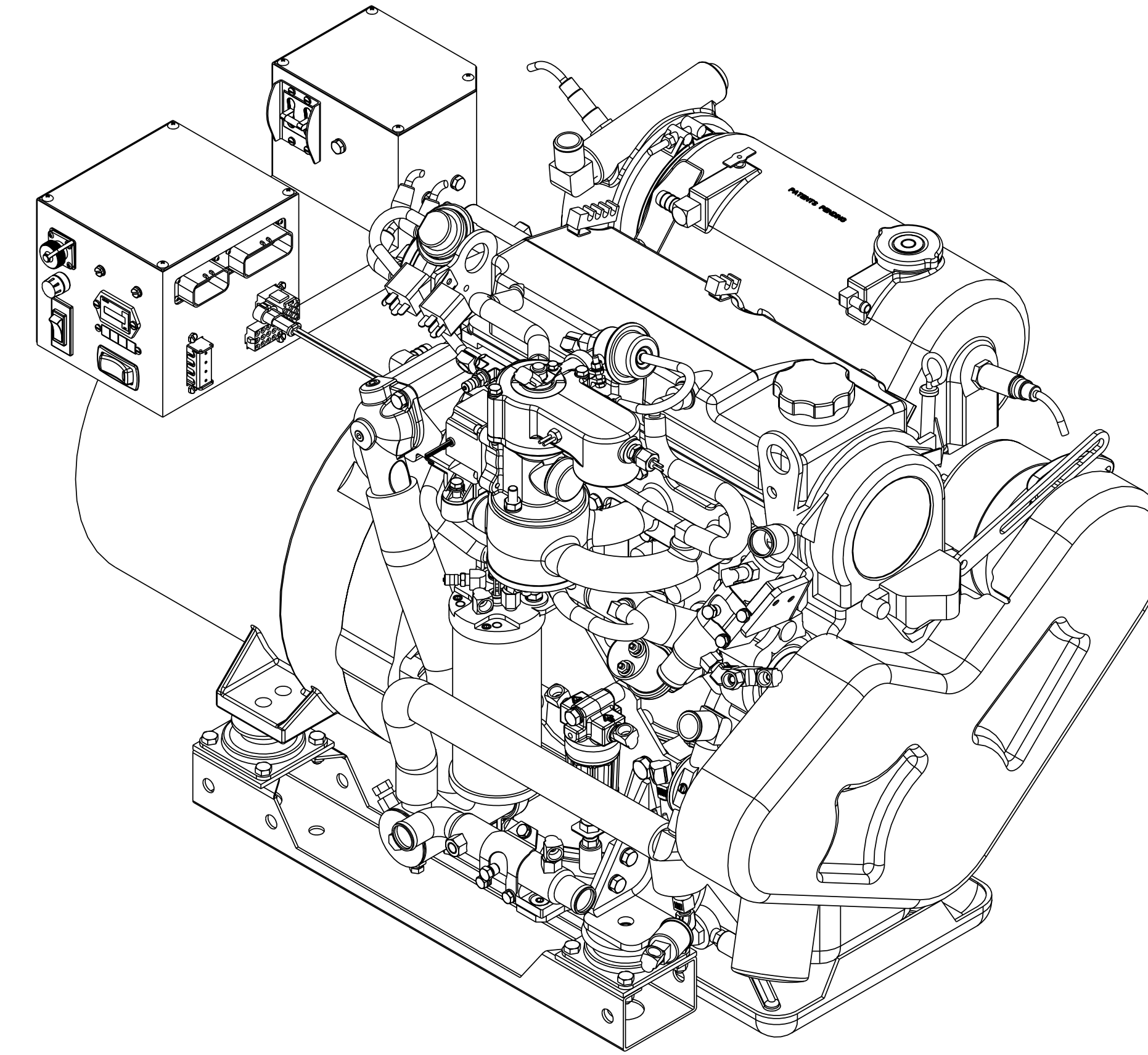
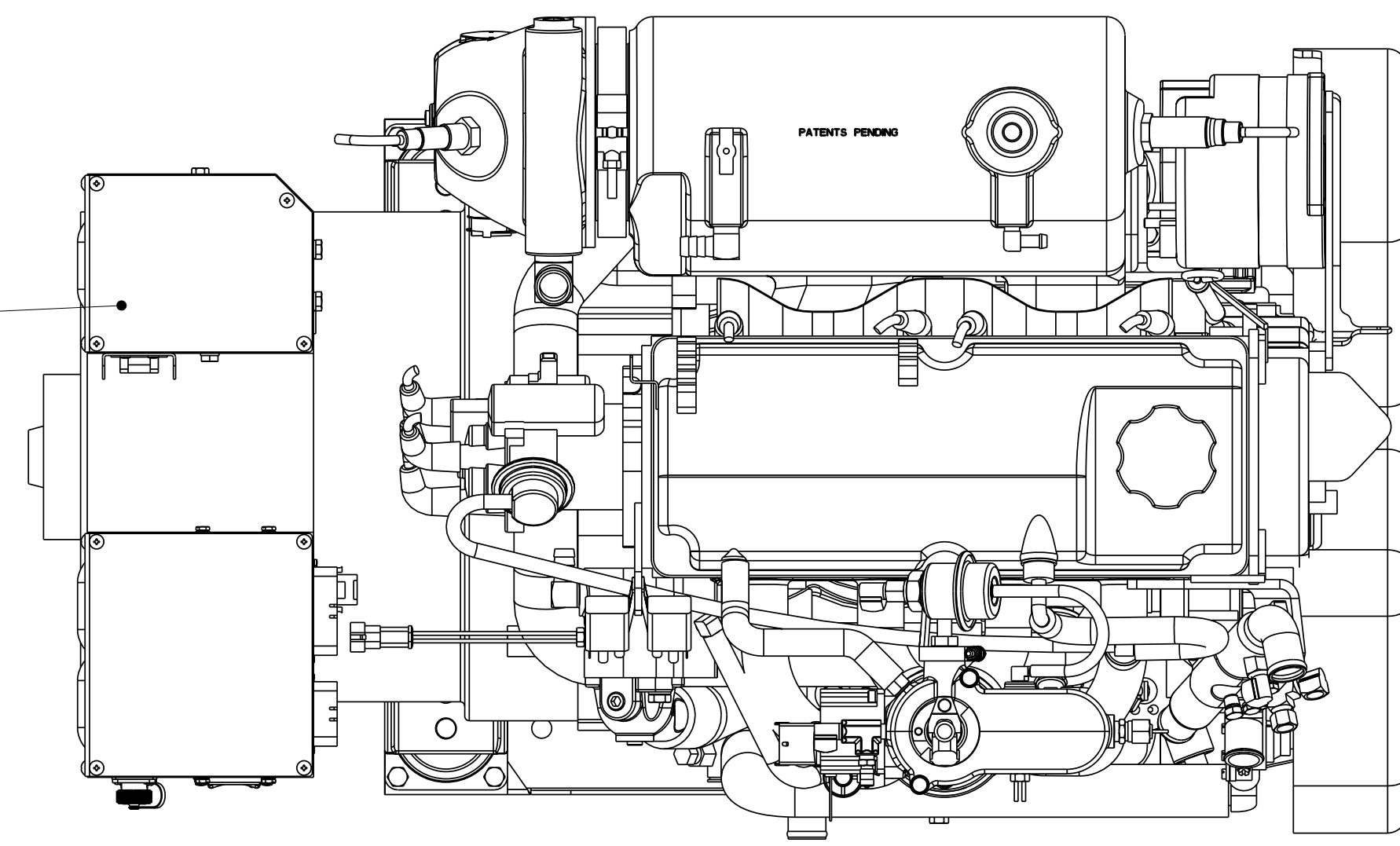
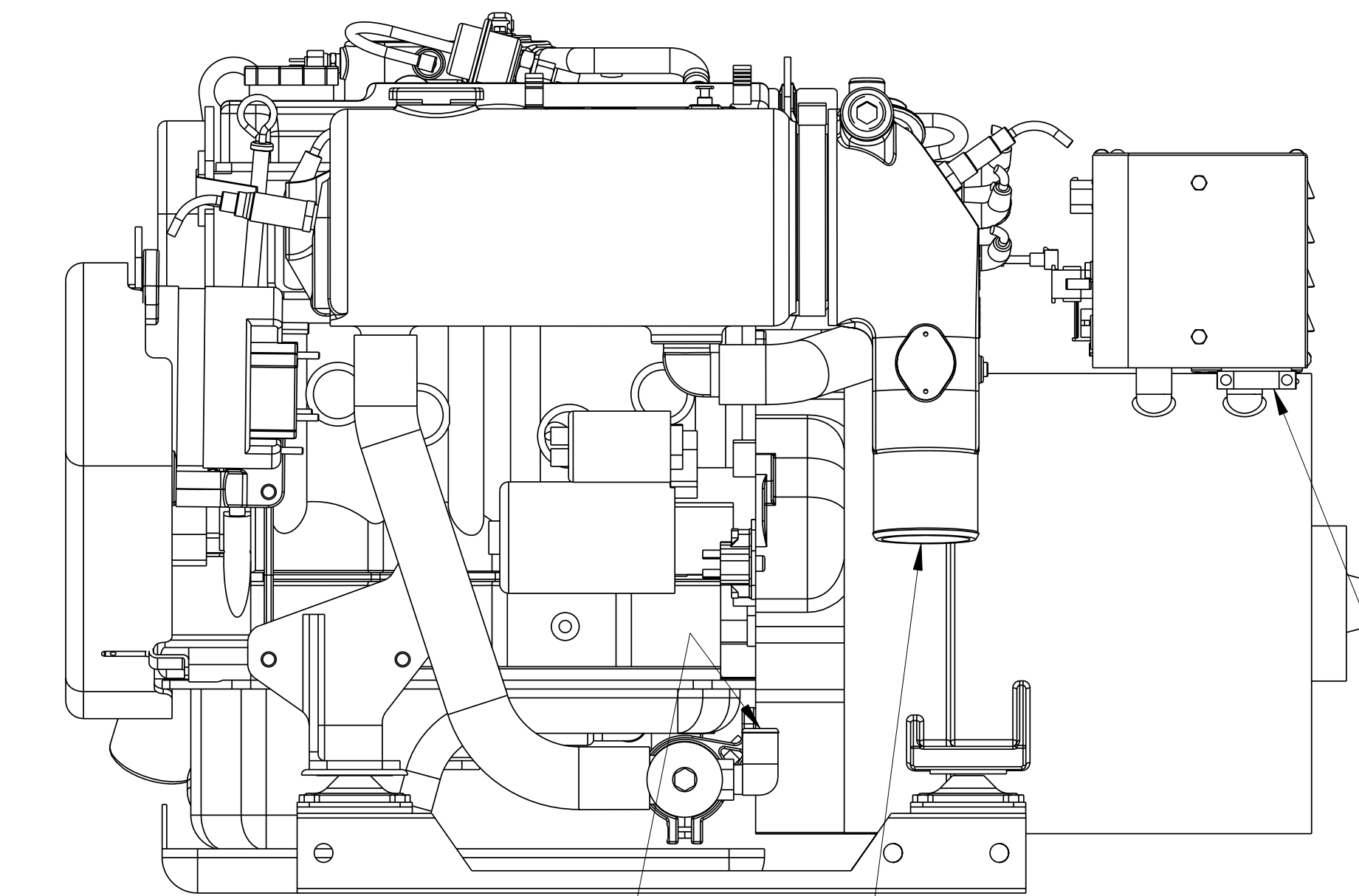
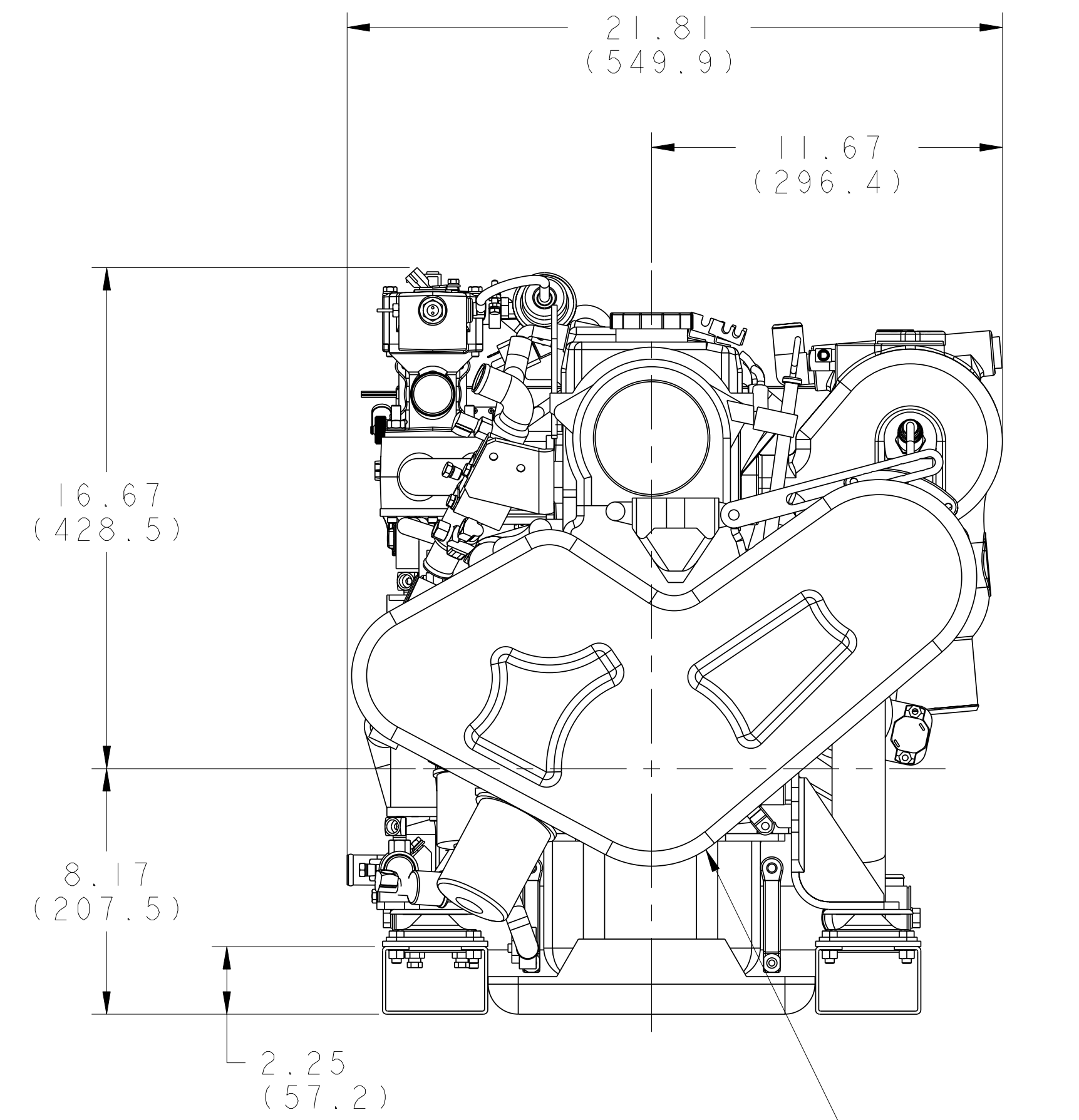
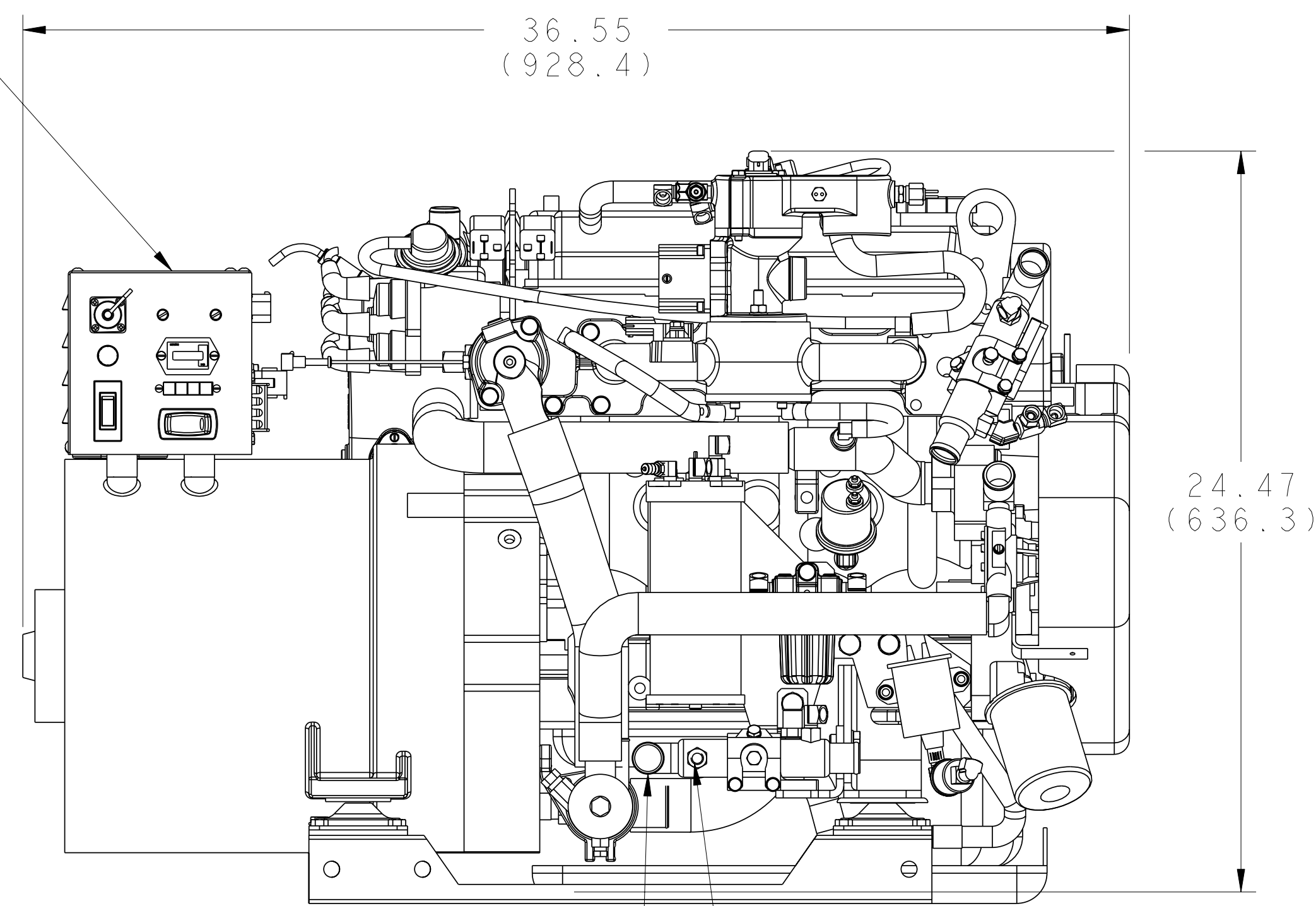
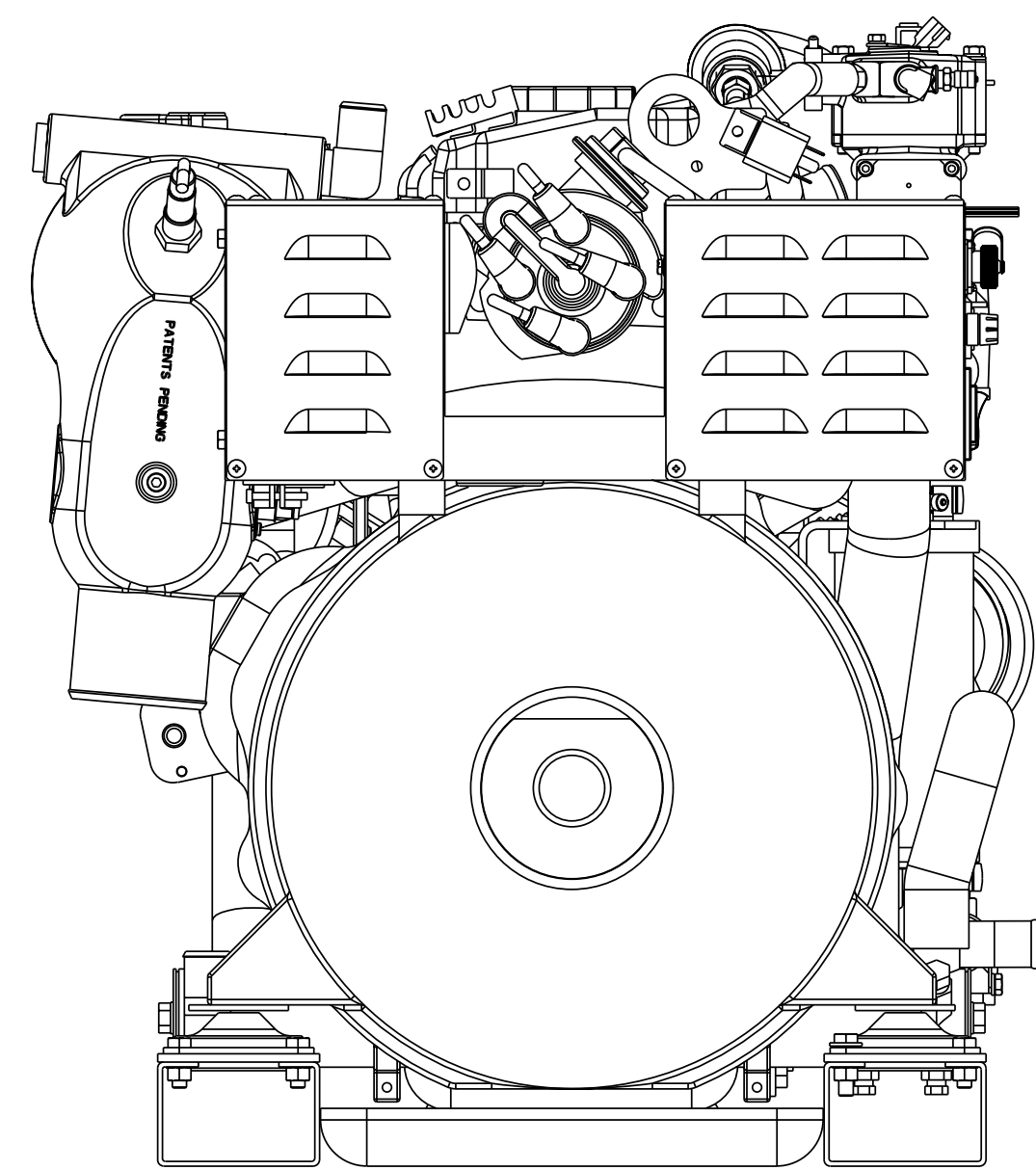


| ECO NO. | DATE    | REV. | REVISION RECORD  | AUTH. | DR. BY |
|---------|---------|------|--|-------|--------|
|         | 7-30-04 | A    | REVISED INTAKE AND THROTTLE BODY ASSEMBLY                |       | WRM    |
| 6092    | 10-3-05 | B    | UPDATE INSTALLATION DRAWING WITH RETURNLESS FUEL SYSTEM. |       | GA     |

AC OUTPUT CIRCUIT BREAKER



CONTROL PANEL



RAW WATER INLET  
Ø1.00 I.D. HOSE

CUSTOMER FUEL CONNECTION  
1/8-27 NPT FEMALE

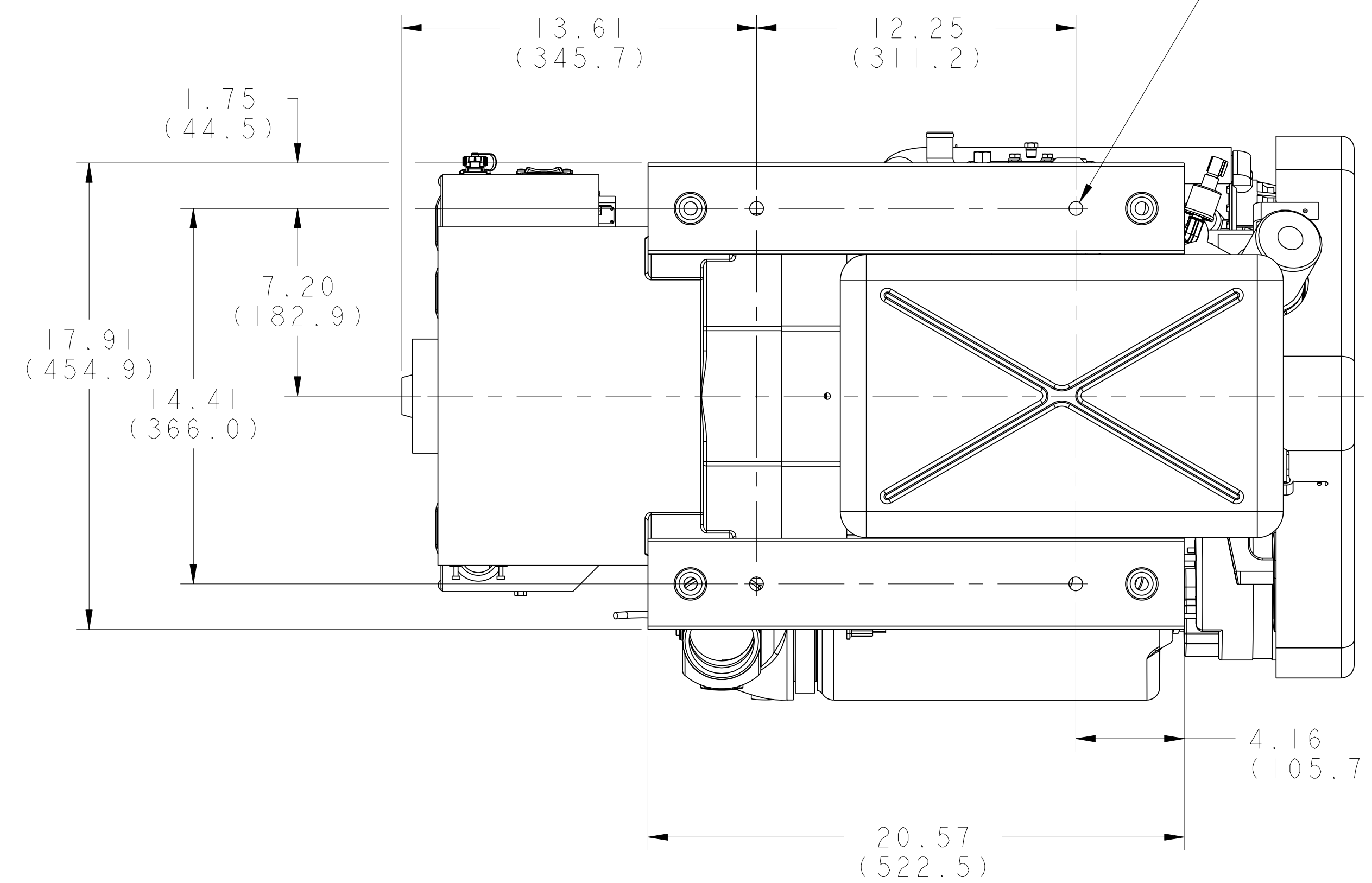
BELT GUARD

RAW WATER DISCHARGE  
Ø1.00 I.D. HOSE

EXHAUST OUTLET  
Ø3.00 I.D. HOSE

A.C. CONNECTION  
WIRING OUTLET

Ø.53 HOLE FOR 1/2" LAG  
BOLT - 4 PLACES



DIMENSIONS IN BRACKETS ARE IN MILLIMETERS

| TOLERANCES<br>(UNLESS OTHERWISE NOTED) |             | WESTERBEKE CORPORATION<br>TAUNTON, MA. 02780 |                                     |
|--|-------------|--|-------------------------------------|
| INCHES                                 | MILLIMETERS | TITLE  |                                     |
| .XX ± .02                              | .X ± 1.0    | INSTALLATION DRAWING                         |                                     |
| .XXX ± .005                            | .XX ± .13   | 14.0 KW, SBEG                                |                                     |
| CAST ± .03                             |             | DRAN BY                                      | DATE                                |
| FINISH ± .2                            |             | WRM  | 04/Mar/104                          |
|  |             | APPROVED BY                                  | DATE                                |
|  |             |  |                                     |
| DIMENSIONS                             |             | SCALE  | SIZE                                |
| INCHES                                 |             | 0.250  | DRAWING NUMBER                      |
| MILLIMETERS                            |             |  |                                     |
| (WHEN APPLICABLE)                      |             | SHT. 1 OF 1                                  | REV. <b>E</b> <b>49272</b> <b>B</b> |