



The perfect solution for all your power needs.

Cruise carefree with Westerbeke power at your fingertips.

The 15 BTDB Westerbeke, a flawless smooth, quiet, compact, diesel generator. This state-of-the-art generator easily provides all your shipboard power needs, including electric ranges, microwave ovens, air conditioners, refrigerators, TVs, hair dryers, vacuum cleaners and other small appliances and power tools.

Powerful, lightweight, economical to operate, and above all, reliable. Specially engineered to operate in a hostile marine environment, and built by Westerbeke using experience gained in supplying generators to the United States Navy and Coast Guard as well as commercial vessels and pleasure craft. Along with other features, these generators are designed to run at 1800 RPM for greater longevity. They are equipped with simple control systems rather than troublesome relays or solid state components and are fresh-water-cooled to operate at optimum temperature levels.

Easy to install, easy to service (one side service), and easily field convertible to either 50 or 60 Hertz AC output.

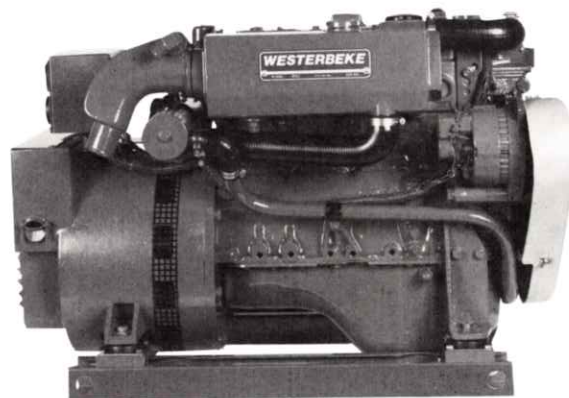
Westerbeke products are supported by a worldwide network of master distributors and dealers providing parts, service and technical support.

It is to your advantage to select a generator made by Westerbeke, world leaders, the people who pioneered the new truly "quiet breed" of generators. Over 50 years of marine experience go into these products.

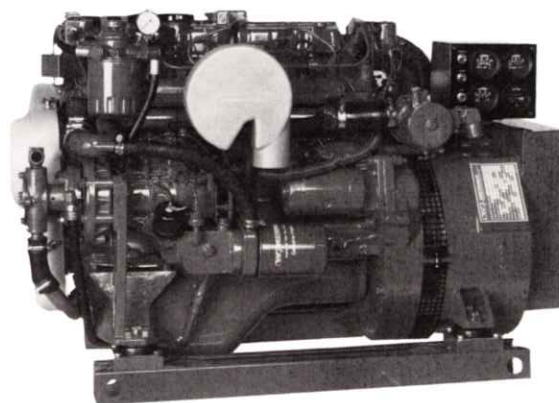
And you can be sure that all Westerbeke will continue to bring innovation to its products in the future.

Many features are standard equipment

- Fresh water cooling
- Instrument panel
- Vibration mounts — fail safe rubber type
- 45° water injected elbow
- Coolant recovery tank
- 51 amp alternator
- Safety stop switch
- Drip tray
- Belt guard
- Gear-driven sea water pump
- Lube oil drain hose
- Safety shut-downs — high coolant temperature, low oil pressure, high exhaust temperature
- Oil fill — top
- Self-bleeding fuel system
- Operator's manual and parts List
- Electronic governor
- "CE" Mark
- A.C. Circuit Breaker installed (single phase)



15 BTDB
Diesel Generator



15 BTDB
Diesel Generator

Dimensions

Length	39.63" (1006.6 mm)
Width	22.63" (574.8 mm)
Height	25.93" (658.6 mm)
Weight	765 lbs. (347.1 kg)

See other side for more dimension information

Generator Design

DESIGN: Brushless, four pole, revolving field, power takeoff.
VOLTAGE REGULATION: Standard $\pm 5\%$ no load to full load.
FREQUENCY REGULATION: 0.3 Hz (0.005%) no load to full load.
INSULATION: Class "F", as defined by NEMA MG1-1.65.

TEMPERATURE RISE: Within NEMA MG1-22.40 definition when operating at full load.

COOLING: Cast centrifugal blower, direct connected.

ELECTROMAGNETIC INTERFERENCE LEVEL: Exceeds requirements for most marine radio-telephones and standard TVs.

Model	Electrical Characteristics					Ratings		Engine	
	Volts	Amps	Hertz	Phase	Wire	Power Factor	KW	RPM	Start
15.0 BTDB-614*	120/240	125/62.5	60	1	4	1.0	15	1800	Remote
12.0 BTDB-514*	230	52.2	50	1	4	1.0	12	1500	Remote

Three phase units, 50 & 60 Hertz, are available in these ratings. Contact your nearest authorized Westerbeke Distributor for information.

*Adjustable for 50 or 60 hertz

Specifications

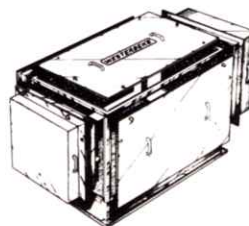
Number of cylinders	4 Cylinder vertical in-line
Type	4 Cycle
Displacement	134.8 cu. in. (2.21 liter)
Bore and stroke	3.50" x 3.51" (88.9 mm x 89.1 mm)
Compression ratio	21:1
Rated rpm	60 Hz - 1800 rpm 50 Hz - 1500 rpm
HP @ 1800 rpm	26 HP
Maximum angle of operation	Not to exceed 25° in all directions
Exhaust elbow conn.	2" OD (50.8mm)
Sea water conn.	1" OD (25.4mm)
Dry weight	765 lbs (347.1 kilos)
Combustion System	Swirl Type
Aspiration	Naturally aspirated
Lubrication system	Forced lubrication by gear pump
Cooling system	10.5 quarts (9.9 liters)
Starting aid	12 volt sheathed type glow plug
Fuel load consumption	1.25 GPH (4.8 LPH)
Fuel injection pump	Bosch type solenoid shutoff
Governor	Electronic
Injectors	Throttle type
Fuel Filter	Secondary, replaceable type
Lube oil filter	Full flow, spin-on element
Lubricant capacity	5.32 quarts (5.03 liters)
Fuel transfer pump	12 volt electric type
Fuel supply and return piping	1/4" ID (.635 mm) minimum 3/8" ID (.925 mm) maximum
Starting motor	12 volt, solenoid, actuated shift
Alternator	51 amps
Cold cranking amps	280 amps
Electrical system	12 volts DC, negative ground

Construction — Engine Components

Cylinder head	Cast iron
Cylinder block	Cast iron
Crankshaft	Forged crankshaft, five main bearings
Valves	Overhead valves, rotating type
Fuel system	Self bleeding
Intake system	Tuned intake silencer for maximum noise reduction
Cooling system	Fresh water-cooled with heat exchanger
Exhaust manifold	Cast aluminum, fresh water-cooled

Optional Equipment

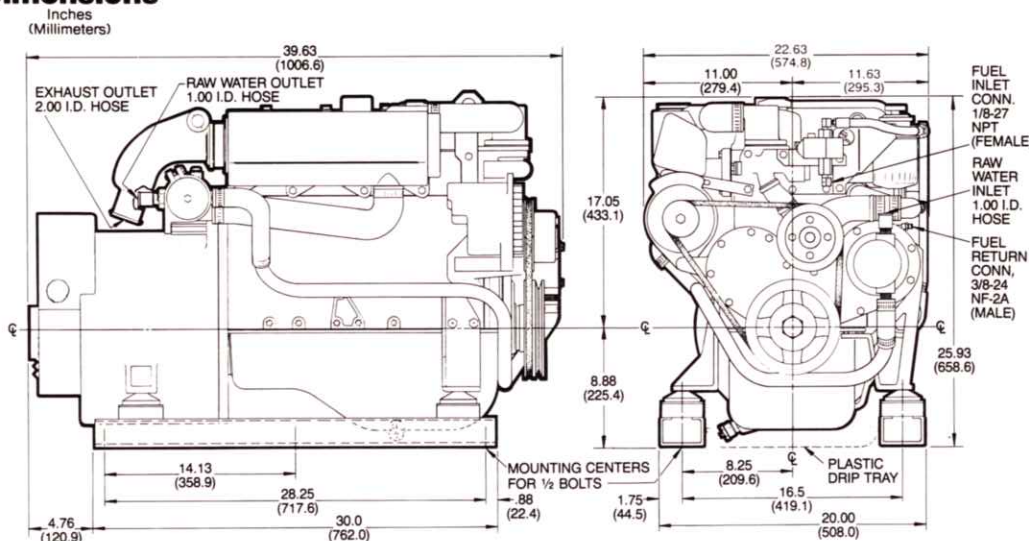
- Remote start-stop panel
- 15' panel ext. harness and cover plate
- Dual station senders
- Ship-shore switch
- Power takeoff adapter
- Fuel/water separator
- Hydro-hush muffler and fittings
- "A" on-board spare parts kit; "B" extended cruising spare parts kit
- Anti-siphon valve for overboard cooling discharge water
- Technical Manual
- Sound Guard sound enclosure



Optional Sound Guard enclosure provides optimum silencing for the generator. Ruggedly constructed with all panels removable for easy servicing and maintenance.

Length — 45.25" (1149.4 mm)
 Width — 26.75" (679.4 mm)
 Height — 28.75" (730.3 mm)
 Weight — 115 lbs. (52.2 Kilos)

Dimensions



Authorized Dealer