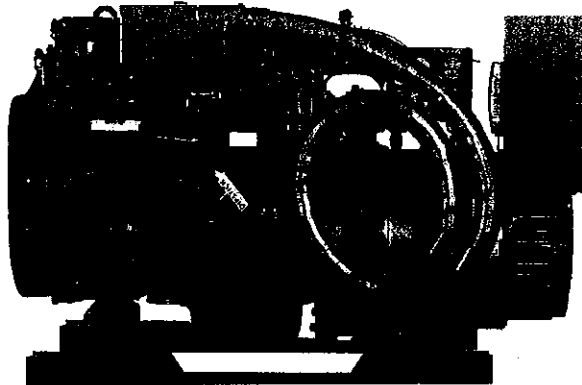




Proven power and reliability...



32BEDA Diesel Generator

Quiet and Compact

The 32BEDA is a 4-cylinder smooth, quiet and compact diesel generator. A tuned air intake silencer provides increased power while diminishing sound. Designed and built using experience gained in supplying generators to the United States Navy and Coast Guard, the 32BEDA has evolved to be not only compact, but lightweight as well.

Easy Operation and Maintenance

To minimize engine maintenance, the 32BEDA is fresh water cooled and equipped with a simple field tested control system. Easy access to all servicing points and individually removable top and side panels of the optional sound enclosure allow easy installation and maintenance.

Powerful and Reliable

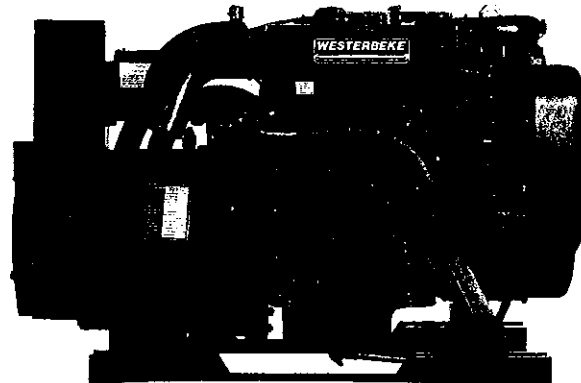
The 32BEDA is powered by a naturally aspirated 3.5 liter engine specially engineered to operate in a hostile marine environment. Powerful but lightweight, it is economical to operate and designed to run at a slow 1800-rpm for longer life.

Full Torque Power Take-Off

An optional PTO, back-end mounted for full torque power take-off, is available. Installation is made simple with Westerbeke's optional sound guard. The lightweight, frameless enclosure is equipped with a removable cover to accommodate a PTO.

Five Year Limited Warranty

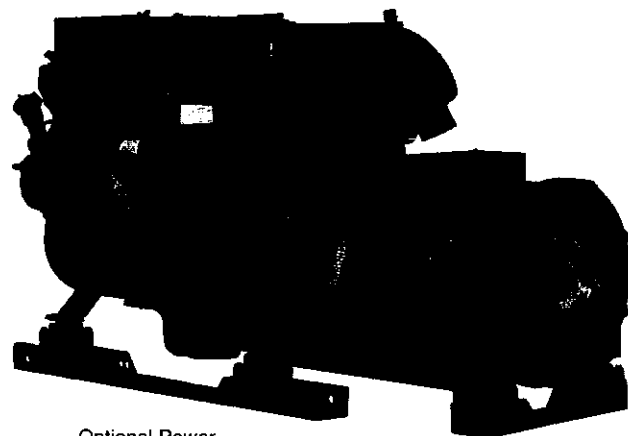
The 32BEDA is backed by Westerbeke's 5-year limited warranty. The presence of Westerbeke in over 65 countries around the world provides customers with easy access to parts, service and technical support worldwide. Established in 1937, Westerbeke is committed to providing its customers with quality products and unequalled after sales support.



32BEDA Diesel Generator

Standard Features

- Instrument panel and safety stop switch
- Remote start-stop plug-in connection
- Extra oil pressure switch for remote signal or control functions
- Electronic governor
- Electronic voltage regulation
- Safety shut-downs - high coolant temperature, low oil pressure, high exhaust temperature, and overspeed
- A.C. circuit breaker
- 50 amp alternator
- Power take-off interface
- Fresh water cooling and coolant recovery tank
- 45 degree water injected exhaust elbow
- Belt driven, raw water pump
- Tuned air intake silencer
- Vibration mounts - fail safe rubber type
- Lube oil drain hose and drip tray
- Oil fill - top and side
- Belt guard
- Operators' manual and parts list
- "CE" Mark



Optional Power
Take-off Shown

Generator Design

DESIGN: Brushless, four pole, revolving field, power takeoff.
VOLTAGE REGULATION: Standard +/- 2% no load to full load.
FREQUENCY REGULATION: 3 Hz (.5%) no load to full load.
INSULATION: Class "H", as defined by NEMA MG1-1.65.

TEMPERATURE RISE: Within NEMA MG1-22.40 definition when operating at full load.

COOLING: Cast centrifugal blower, direct connected.

ELECTROMAGNETIC INTERFERENCE LEVEL: Exceeds requirements for most marine radio-telephones and standard TVs.

Model	Electrical Characteristics					Ratings		Engine	
	Volts	Amps	Hertz	Phase	Wire	Power Factor	KW	RPM	Start
32 BEDA-614	120/240	266/133	60	1	4	1.0	32.0	1800	Remote
25 BEDA-514	230	108.7	50	1	4	1.0	25.0	1500	Remote

Three phase units, 50 & 60 Hertz, are available in these ratings. Contact your nearest Westerbeke Distributor for information.

*Adjustable to 50 or 60 hertz

Specifications

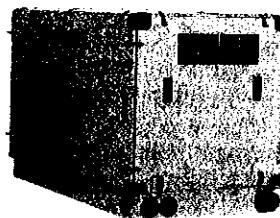
Number of cylinders	4 Cylinder vertical in-line
Type	4 cycle
Displacement	210.8 cu. in. (3.5 liter)
Bore and stroke	3.94" x 4.33" (100.1 mm x 110.0 mm)
Compression ratio	18:1
Rated rpm	60 Hz - 1800 rpm 50 Hz - 1500 rpm
HP @ 1800	46 HP
Maximum angle of operation	Not to exceed 25° in all directions
Exhaust elbow connection	2" OD (50.8mm)
Sea water connection	1" OD (25.4 mm)
Dry weight	1038 lbs. (470.8 kilos)
Combustion system	Direct injected
Aspiration	Naturally aspirated
Lubrication system	Forced lubrication by gear pump
Cooling system	8.5 quarts (8.04liters)
Starting aid	Air intake heater
Full load fuel consumption	3.1 GPH (11.3 LPH) approx.
Fuel injection pump	Cam inline, with solenoid shutoff
Governor	Electronic
Injectors	Orifice type
Fuel Filter	Full flow, replaceable element
Lube oil filter	Full flow, spin-on element
Fuel supply and return piping	1/4" ID (6.35 mm) minimum 3/8" ID (9.52 mm) maximum
Starting motor	12 volt, solenoid actuated
Alternator	50 amps
Cold cranking amps	400-600* amps (Includes heater)
Electrical system	12 volts DC, negative ground

Construction - Engine Components

Cylinder head	Cast Iron
Cylinder block	Cast Iron
Crankshaft	Forged crankshaft, five main bearings
Valves	Overhead valves
Fuel System	Manual delivery
Intake system	Tuned intake silencer for maximum noise reduction
Cooling system	Fresh water-cooled with heat exchanger
Exhaust manifold	Cast aluminum, fresh water-cooled

Optional Equipment

Remote start-stop panel
 15' & 30' connectable panel ext. harness (up to 60'/18.3m)
 Dual station engine instrument panel with senders
 Ship -shore switch
 Power takeoff with electric clutch
 Fuel/water separator
 Hydro-hush muffler and fittings
 "A" on board spare parts kits; "B" extended cruising spare parts kit
 Anti-siphon valve for overboard cooling discharge water
 Technical manual
 Sound Guard sound enclosure



Optional Sound Guard enclosure provides optimum silencing. This lightweight, frameless enclosure is equipped with a removable cover to accommodate a PTO. Any of the four side panels and the top panel can be removed individually for easy maintenance.

Length - 49.4" (1254.8 mm)
 Width - 26.5" (673.1 mm)
 Height - 30.9" (784.9 mm)
 Weight - 96 lbs. (43.6 kilos)

Dimensions Inches (millimeters)