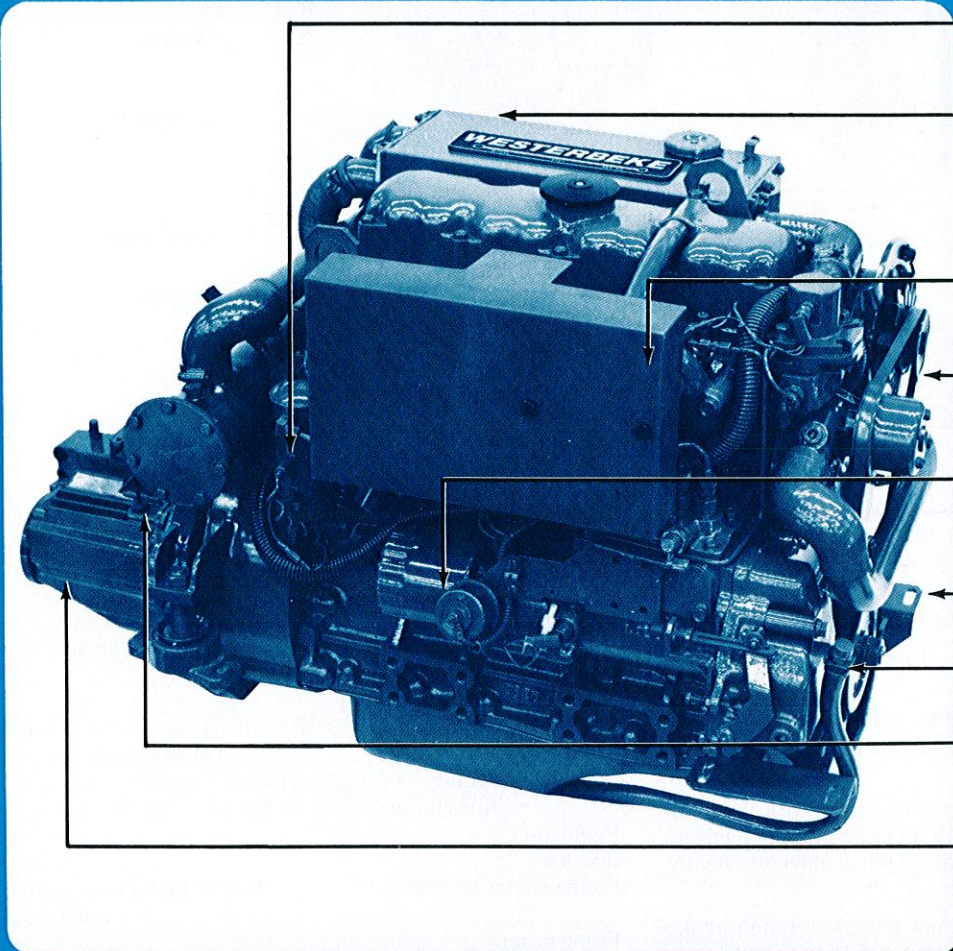


WESTERBEKE

smooth quiet efficient power
in a rugged 33 hp marine diesel

33



SELF-BLEEDING FUEL SYSTEM

FRESH WATER COOLED TWO PASS ALUMINUM MANIFOLD THAT INCLUDES A REMOTE COOLANT RECOVERY TANK FOR CONTINUOUS MONITORING OF THE COOLING SYSTEM

TUNED AIR INTAKE SILENCER

12 VOLT 50 AMP ALTERNATOR

SPIN ON OIL FILTER

ADJUSTABLE FLEX ISOLATOR ENGINE MOUNTS 15" ON CENTER

OIL DRAIN HOSE

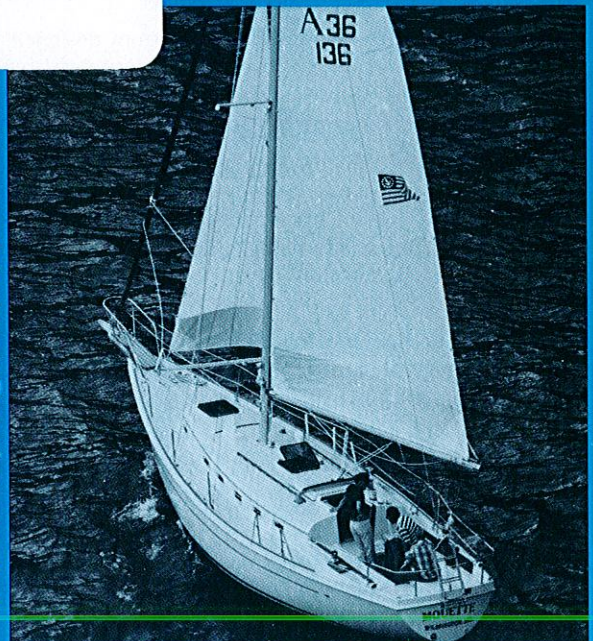
HEAT EXCHANGER W/ REMOVABLE END CAPS

SHORT PROFILE TRANSMISSION

A NEW GENERATION OF MARINE ENGINES

The Westerbeke 33 provides 4 cylinder, four cycle smoothness in a lightweight, compact engine. Cylinder head and block are of cast iron for strength and long life while aluminum is used in non-wearing parts for lightweight. The performance from this 91 cubic inch engine will amaze you. Standard equipment not usually found on engines this size include *Fresh Water Cooling, 12 Volt 50 Amp Alternator, Prewired Electrical System, Self-Bleeding Fuel System* and a convenient *Oil Drain System* to eliminate messy oil changes.

The Westerbeke 33 is the most powerful of the series 15 (narrow mounts) in the Westerbeke family of marine diesels. Ten additional engines are available from 13 to 120 hp all fresh water cooled and built for performance, durability and economical operation . . . A true family of marine engines with standardized features and commonized parts for higher quality at lower costs.



"Princess 36" by Allied Yachts

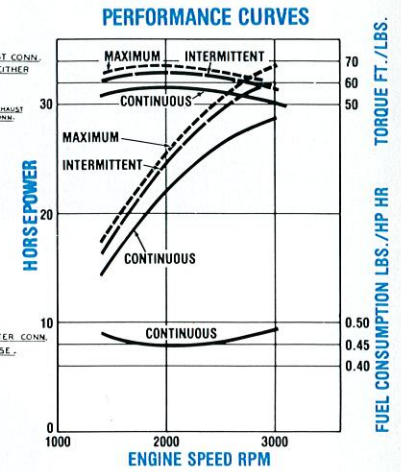
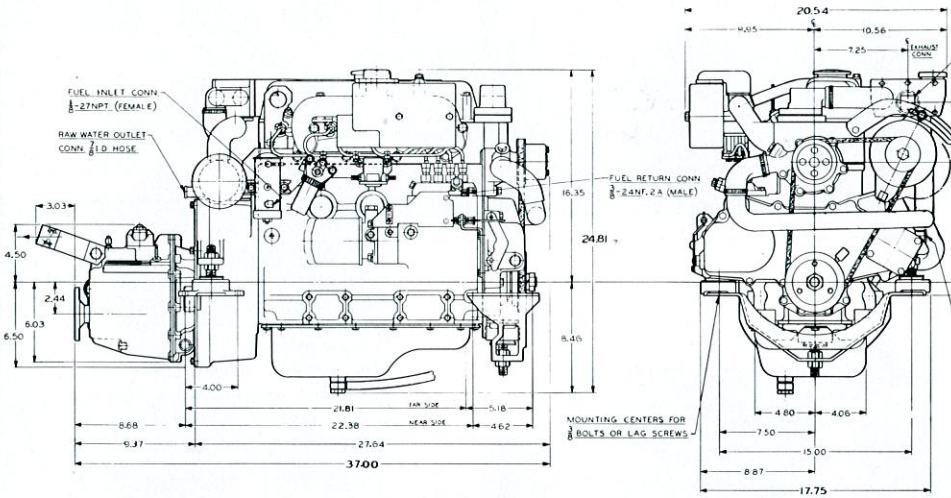


ENGINES: 13, 21, 27, 30, 33, 40, 50, 52, 58, 70, 80, 100, 120

Fresh Water Cooled Diesels from Westerbeke.

A COMPACT FOUR CYLINDER FOUR CYCLE MARINE ENGINE

WESTERBEKE 33



PERFORMANCE DATA

Maximum Power Output	33/3000 RPM
Typical Fuel Consumption Rate	.063 US gal/HP/hr
Typical Fuel Consumption Rate at 2500 RPM	
When Wheeled to Turn 3000 RPM	1.2 US gal/hr
Capacity of Lubricant	4.2 Qts
Capacity of Coolant	8 Qts

SPECIFICATIONS

Model Number	Westerbeke 33
Engine Type	4 cycle, water cooled, naturally aspirated, vertical overhead valve, diesel engine
Cylinder arrangement	4 cylinders in line
Bore & Stroke	3.07" x 3.07" (78mm x 78mm)
Displacement	.91 cubic inch (1.490 litre)
Compression ratio	23 to 1
No. of main bearings	5
Rotation	SAE Std. (clockwise facing front end)
Fuel Injection Pump	Bosch Distributor Type Individual plunger for each cylinder, cam driven in a precision housing machined in block for rigidity and accuracy.
Regulator	IC (built in type)
Injectors	Pintle type
Combustion Chamber	Swirl type for easy starting and quiet operation
Firing order	1-3-4-2
Governor	Mechanical centrifugal type
Fuel filter	Paper element type
Lubricating device	Forced lubrication by trochoid pump
Lub. oil filter	Full flow, spin on, paper element type
Starting motor	Geared electric motor, 12 Volt.
Starting aid	12 Volt sheathed type glow plug
Fuel pump	Electric plunger type
Dry weight of engine (w/trans.)	498 lbs.
Power take-off	Various crankshaft pulleys

QUALITY CONSTRUCTION — fresh water cooling with thermostatic controls, 50 amp alternator with radio shielding, metallic water piping wherever possible for endurance, cog-type alternator belts reduce slippage, glow plug cold weather starting aid, oversized 3" diameter heat exchanger, shut-off function built into throttle control, cast iron head and block for long life.

PARTS SUPPLY — nationwide stock of parts for Westerbeke engines and generators means better service from an expanding network of stocking distributors and dealers.

EXCEPTIONAL SMOOTHNESS — 4 cylinder 4 cycle engine, high inertia flywheel, vibration isolating mounts.

SELF BLEEDING FUEL SYSTEM — Restarts after running out of fuel without manual air bleeding.

VERY LIGHT WEIGHT — aluminum water-cooled two pass exhaust manifold and flywheel housing, save weight without sacrificing cast iron head and block.

EASE OF MAINTENANCE — removable end caps on heat exchanger for easy clean out, convenient oil drain system needs no hand pump, all wiring is led to a single 8-pin connector; heavy duty zinc anodes for heat exchanger.

EXCEPTIONAL QUIETNESS — custom designed, tuned intake silencer reduces intake air noise; modern swirl type combustion chamber design softens diesel clatter.

STANDARD EQUIPMENT

- Short profile 2-1 manual transmission • Propeller half coupling
- Adjustable flex isolator engine mounts (15" on centre)
- Fresh water cooling system • Coolant recovery tank
- 12 volt 50 ampere alternator • Glow plug cold weather starting aid
- Throttle, stop, and shift control brackets • Operators manual
- Engine pre-wired at the factory with a single 8 pin connector

OPTIONAL EQUIPMENT

- Various accessory front pulleys
- Walter Injected Exhaust Elbow
- Hydro-Hush Muffler
- Sea Water Strainer
- Alternator Output Splitter
- Five function Electric Instrument Panel including Hour Meter and Tachometer
- Various optional transmissions
- Front exhaust outlet for Vee Drive applications



CALL YOUR WESTERBEKE REPRESENTATIVE

OR CONTACT THE...

J. H. WESTERBEKE CORP.



Avon Industrial Park, Avon, MA 02322, (617) 588-7700
Cable: Westcorp, Avon, Telex: 92-4444