

CS 36
by
CS YACHTS

WESTERBEKE 30

MARINE DIESEL ENGINE

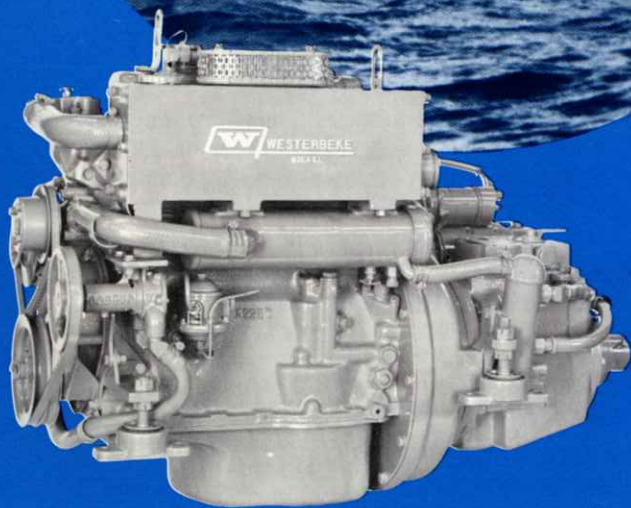
formerly
FOUR-91

The four cylinder WESTERBEKE 30 is one of the smoothest, quietest marine diesels available.

Its closed circuit system cools both engine block and exhaust manifold with fresh water, preventing seawater-to-engine contact, reducing corrosion and prolonging engine life.

The WESTERBEKE 30, at 25 horsepower, is ideal for most cruising boats in the popular 35 to 40 foot range. It has been accepted by both custom and major stock boatbuilders. They find that the plug-in engine pre-wiring and the many factory installed options save time in construction.

The WESTERBEKE 30 has quickly become one of the most popular engines in our line for original installation and repowering.



WESTERBEKE 30 with Paragon P20
direct drive hydraulic gear



WESTERBEKE 30 with Paragon SA0 manual
direct drive showing pre-wiring

WESTERBEKE 30

SPECIFICATIONS

Type: Four cylinder four cycle vertical in-line diesel.

Displacement: 91 cu. in. Bore 2 $\frac{7}{8}$ ", stroke 3 $\frac{1}{2}$ ".

Power: 25 hp at 2500 rpm (see power curve).

Compression Ratio: 23:1.

Weight: 470 lbs. basic engine. Add gear weights opposite page for IOR weight.

Fuel Injection Equipment: CAV distributor type injection pump and CAV Pintaux nozzles working in conjunction with Ricardo Comet V combustion chambers.

Cylinder Block and Head: High quality iron castings, mono block.

Crankshaft: Forged steel, counter balanced.

Camshaft: Forged steel.

Connecting Rods: Forged steel.

Pistons: Aluminum.

Main Bearings: Three, tri metal, heavy duty.

Lubrication: Eccentric rotor pressure pump, camshaft-driven, supplies 60 psi pressure to all parts.

Exhaust Manifold: Fresh water cooled.

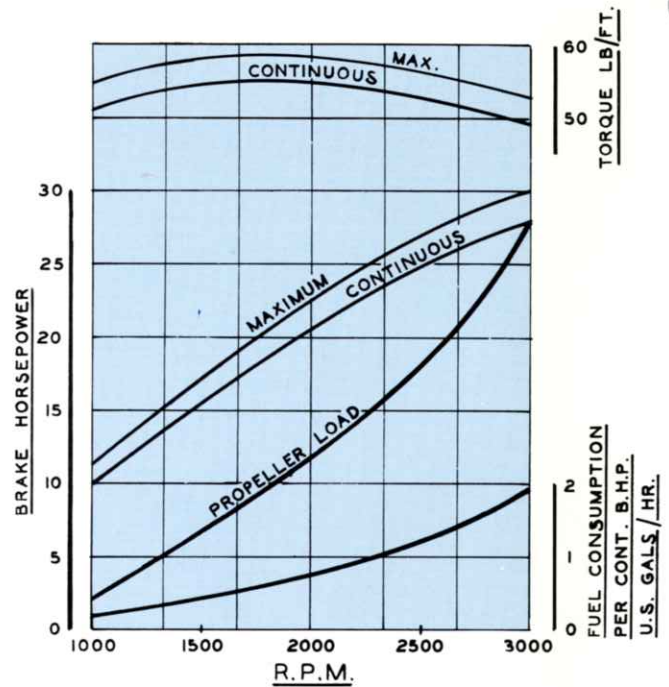
Cooling System: Closed circuit system with heat exchanger mounted.

Angle of Installation: 12° maximum.

Electrical System: 12-volt negative grounded system with 55 amp alternator.

Transmission: See individual gears opposite for specifications and propeller rotation.

Mounting: Flexible rubber mounts on 18" centers standard, 16" front mounts available.



STANDARD EQUIPMENT

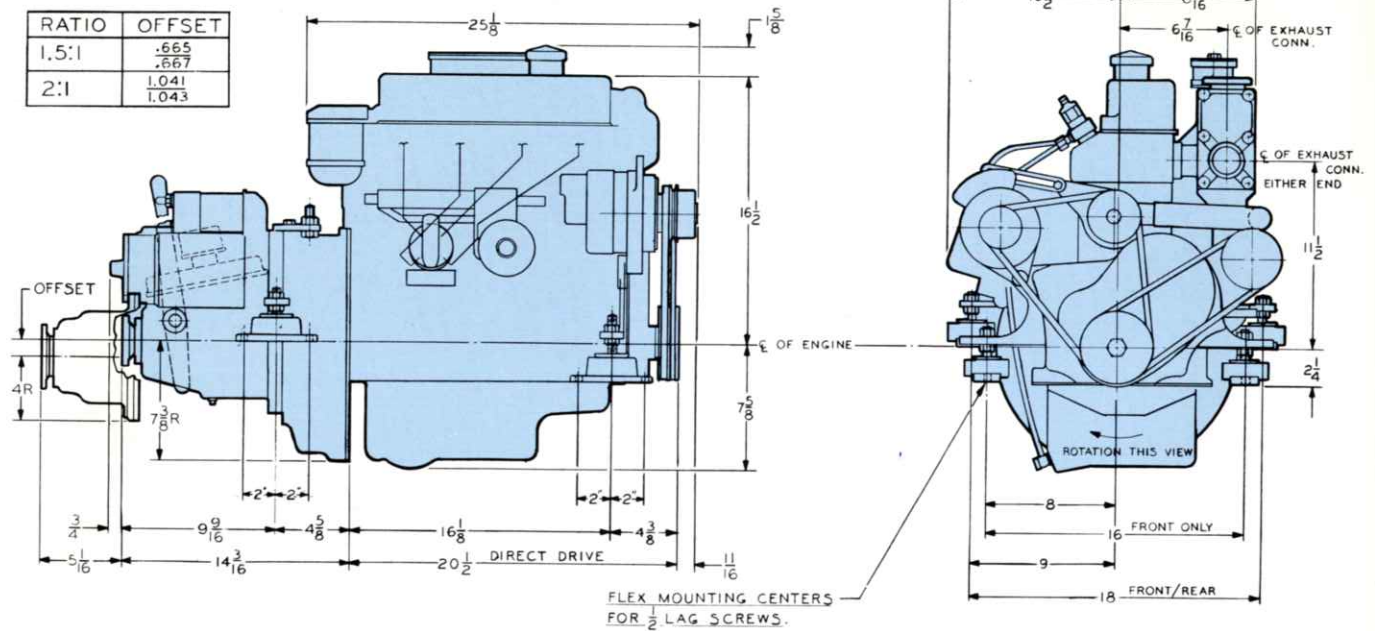
Fresh water cooling system, with heat exchanger, surge tank and pumps mounted on engine; flexible engine mounts; propeller shaft coupling; clutch lever with lower extension for remote control where applicable; mounting brackets for control cables; spin-on full flow lube oil filter, lube oil cooler, sump pump and hose; engine-mounted secondary fuel oil filter, fuel lift pump with hand primer, flexible hoses for fuel inlet and return; cold weather starting aid; 12 volt, 55 amp alternator with transistor regulator; plug-in engine pre-wiring including pre-wired start panel with 10' cable; threaded 1 $\frac{1}{2}$ " IPS exhaust flange; fully illustrated instruction manual and parts list.

OPTIONAL EQUIPMENT

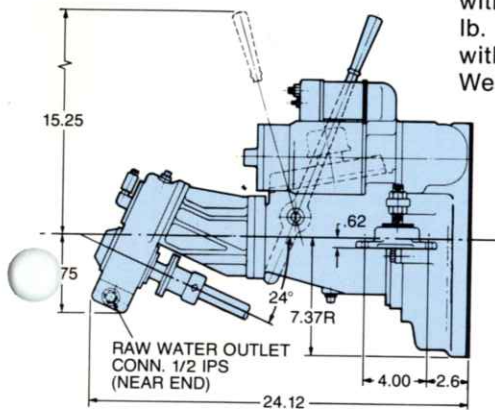
High efficiency primary fuel filter; front opening exhaust manifold, water injected exhaust elbow, Hydro-Hush stainless steel waterlift muffler, flexible stainless steel exhaust section; sea water strainer, remote fresh water expansion tank; front end lube oil fill; pre-wired all-electric instrument panel with 10' cable, extra 10' cable for instrument panel or start panel; high water temperature, low oil pressure alarm system; 5 $\frac{1}{2}$ " diameter crankshaft-mounted accessory pulley; flexible shaft coupling; special engine mounts; spare parts kits.



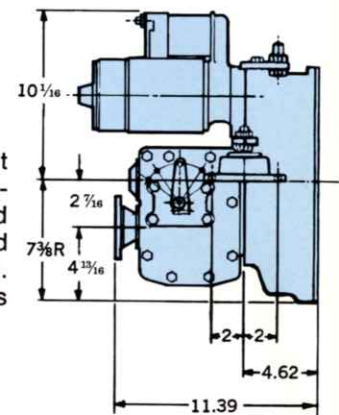
RATIO	OFFSET
1.5:1	.665 .667
2:1	1.041 1.043



The drawing above shows our standard WESTERBEKE 30 with model **SAO Paragon direct manual gear**. Weight 58 lb. Turns left hand propeller. Also shown, reduction gear with 1½:1 and 2:1 ratios. See table for dimensions. Weight 82 lb. Turns left hand propeller.



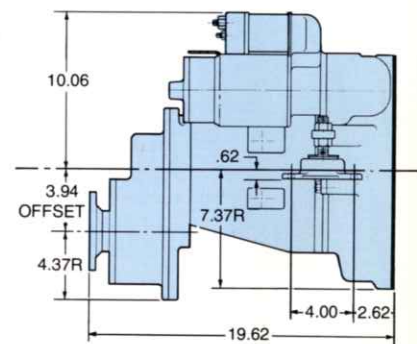
WESTERBEKE Short Profile Sailing Gear. The most compact 2:1 reduction package ever! Features positive neutral for free-wheeling, silent-running shaved case-hardened helical gears, heavy-duty tapered roller bearings, and instant acting fingertip control. (Use Morse 33C cable or equal.) Weight 21 lb. Turns right hand propeller.



PARAGON SAOV. Use our front end exhaust outlet with this manual vee drive. Available in ratios of 1.29:1, 1.67:1 and 2:1. Weight 90 lb. Turns left hand propeller.

RATIO	DIM. A	DIM. B	OFFSET
1.50:1	21.19	4.50	0.85
2.04:1	21.19	4.50	1.35
2.52:1	21.50	5.25	1.90
3.00:1	21.50	5.25	2.10

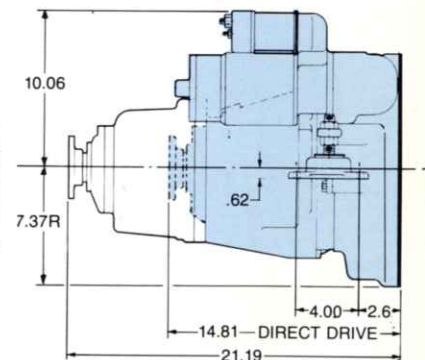
WESTERBEKE-PARAGON P220 Hydraulic Navy Gear. Specially developed to Bureau of Ships specifications, oversized, built for engines to 75 h.p. Has 4" offset, 2.2:1 reduction ratio, turns right hand propeller. Weight 166 lb.



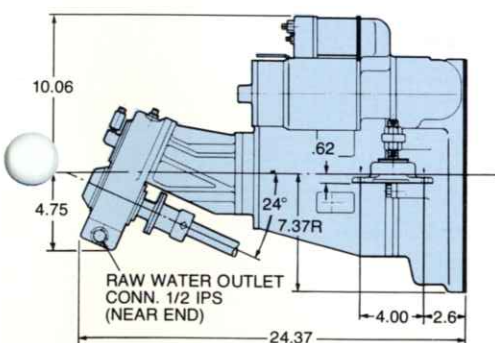
PARAGON P20 Hydraulic Gear. Available with direct drive and in 1½, 2, 2½ and 3 to 1 ratios. The small offset (see table) can be turned down or up to suit the installation. Weight, direct drive 100 pounds, reduction gear 150 pounds. Turns left hand propeller.

WESTERBEKE 30

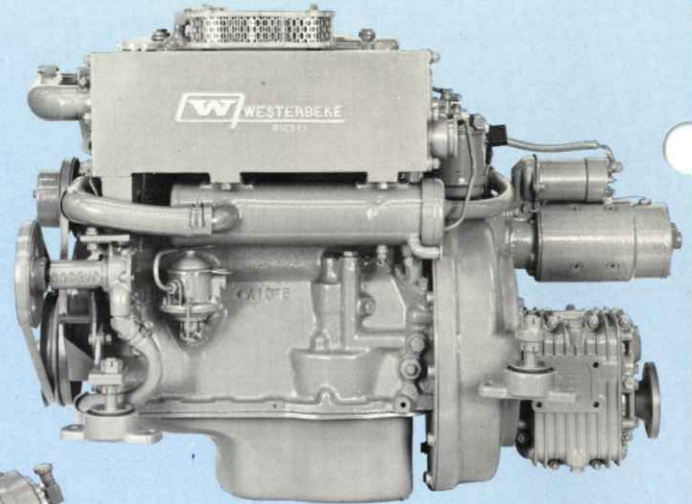
WARNER Hydraulic Gear. In-line construction with no offset. Available with direct drive and 1½, 2, 2½ and 3 to 1 ratios for left hand propellers, and 1.9:1 for right hand propellers. Weight, direct drive 96 pounds, reduction gear 147 pounds.



PARAGON Hydraulic Vee Drive. A Paragon P20 hydraulic gear close-coupled to a Walter vee-drive. Ratios of 1.29:1, 1.67:1, and 2:1. Weight 132 lb. Turns left hand propeller.



**Ask for a Westerbeke.
There's always one to fit your boat.**



WESTERBEKE 30 with Westerbeke 2:1 Short Profile Sailing Gear.

WESTERBEKE 30 with Paragon SAOV vee drive and front end exhaust with water injection elbow

The accessories shown below may be ordered with your engine or purchased separately through Westerbeke Dealers and Distributors:



All Electric Panel — plugs into engine prewiring.



Hydro Hush Muffler used in conjunction with water injected elbow for quieter exhaust systems.



Flexible Shaft Coupling — for smoother performance.



Westerbeke Fuel Water Separator has optional visual/audible alarm when water reaches high point in sediment bowl.



Water Injected Exhaust Elbow, for use with water lift muffler systems.



Alarm System — Engines may be prewired to accept Westerbeke sonic beeper or Aqua Alarm bell.



Spare Parts — A & B Kits are available for on board replacements or emergency repairs.



J. H. WESTERBEKE CORP.

AVON INDUSTRIAL PARK, AVON, MASS. 02322 • (617) 588-7700
CABLE: WESTCORP, AVON • TELEX: 92-4444