

WESTERBEKE 6 KW THREE CYLINDER MARINE DIESEL GENERATOR SET

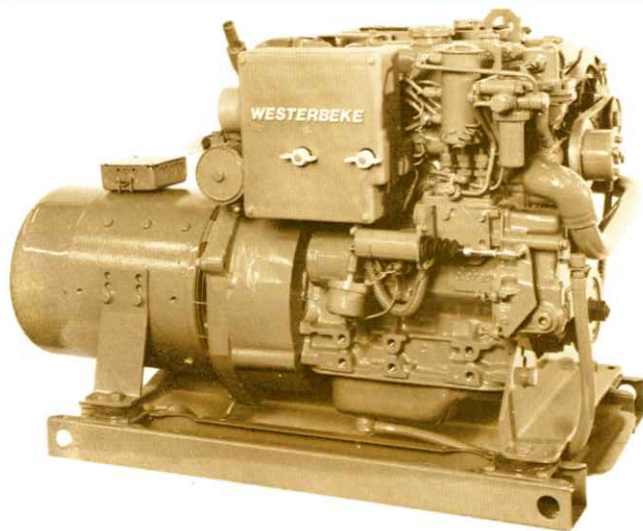


TOLLYCRAFT 48' CONVERTIBLE

A small, reliable, smooth running Generator Set for all your shipboard needs; 120 volt electrical power at the turn of a switch for: Electric Cooking, Microwave Oven, Refrigeration, Cabin Appliances, Power Tools, and Navigation/Communication Equipment. Like all Westerbeke Generator Sets, it is fresh water cooled with an Engine mounted Heat Exchanger. The Engine and Generator are connected through special "Commonized" Drive Discs, Flywheel and Flywheel Housing into a compact carefully aligned Generator Set. The complete unit is mounted on lightweight rails through soft flexible Isolator Mounts that prevent the transfer of vibration. A lightweight removable Drip Tray is fitted under the unit between the mounting rails. The Engine is fitted with an Electric Fuel Pump and Self-Bleeding Fuel System that eliminates hand priming and bleeding. Cast iron cylinder head and block plus swirl type combustion chamber plus tuned air intake silencer produce quiet running unmatched in the industry.

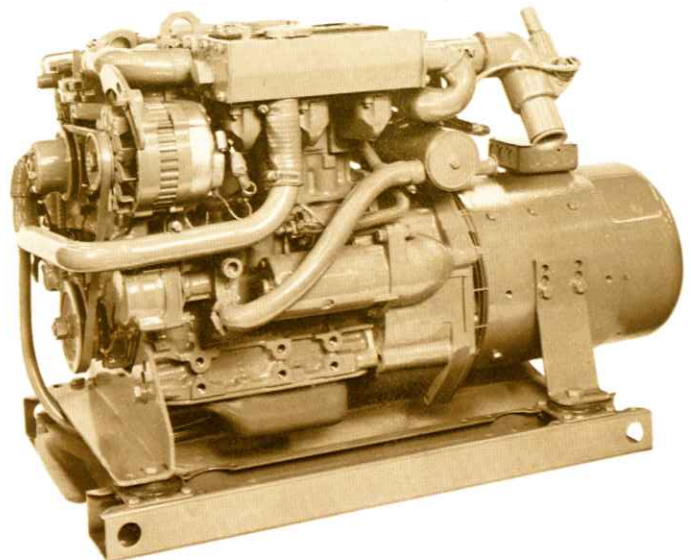
The Westerbeke 6 is lightweight, safe, dependable, durable, and economical to operate. Designed to operate at a quiet 1800 RPM, the Westerbeke 6 offers 3 cylinder, 4 cycle smoothness to provide electrical conveniences usually found only on larger boats.

FOR POWER OR SAILBOAT . . . A NEW SERIES OF DIESEL GENERATOR SETS FROM WESTERBEKE.



- OIL DRAIN HOSE
- SPIN ON OIL FILTER
- SEA WATER PUMP
- FUEL FILTER
- HIGH WATER TEMP & LOW OIL PRESSURE SHUT DOWN
- 12 VOLT 50 AMP ALTERNATOR
- ELECTRIC FUEL PUMP WITH FUEL STRAINER
- TUNED AIR INTAKE SILENCER

- FRESH WATER COOLED 2 PASS ALUMINUM MANIFOLD
- HEAT EXCHANGER W / REMOVABLE END CAPS
- INHERENTLY REGULATED GENERATOR
- REMOVABLE DRIP TRAY
- 12 VOLT GEARED STARTING MOTOR
- VIBRATION ISOLATORS
- MOUNTING RAILS



GENERATORS: 3, 4.4, 6, 7.7, 11, 12.5, 15, 20, 25, 32, 45

Fresh Water Cooled Diesel Generators from Westerbeke.

WESTERBEKE 6 KW MARINE DIESEL GENERATOR

WESTERBEKE 6 KW

DESIGN: Four pole revolving armature, inherently regulated, self limiting, rectifier excited, A.C. slip rings, single bearing design.

VOLTAGE REGULATION: ± 7% no load to full load.

FREQUENCY REGULATION: 3 Hertz (5%) no load to full load.

Class F as defined by NEMA MGI-1.65.

TEMPERATURE RISE: Within NEMA MGI-22.40 definition when operating @ full load.

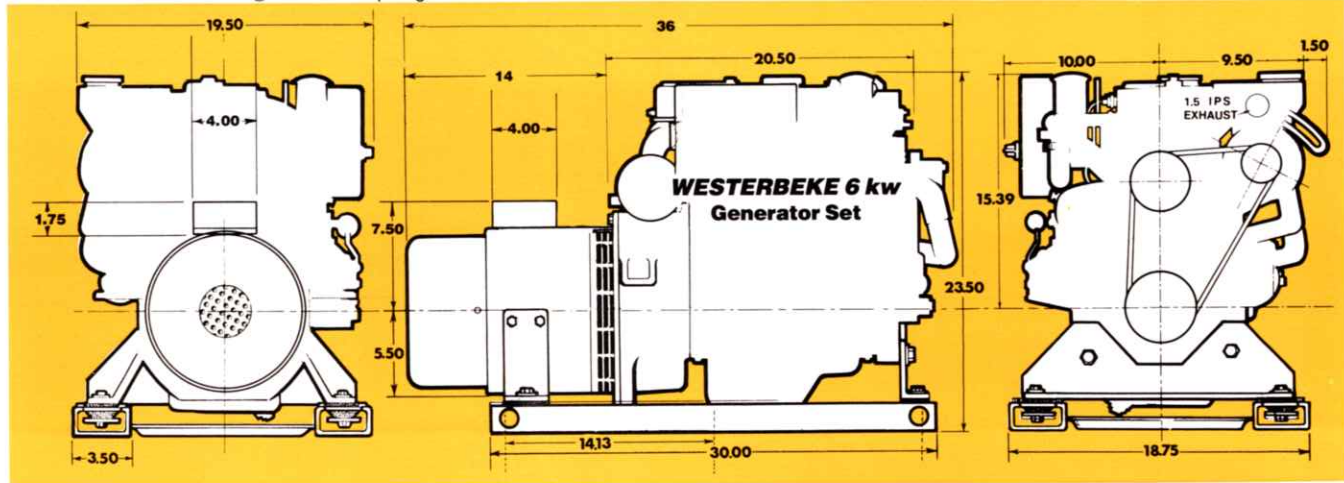
COOLING: Centrifugal blower, direct connected.

RADIO INTERFERENCE LEVEL: Capacitors minimize interference within the limits of most marine applications.

ARMATURE: Balanced laminated steel, double dipped and baked.

ELECTRICAL CHARACTERISTICS						RATINGS		DERATINGS	ENGINE	
Model	Volts	Amps	Hertz	Phase	Wire	Power Factor	KW		RPM	Start
6-614*	120/240	25.7	60	1	4	1.0	6	3.5% each 1000 feet above sea level. 1% for each 10° Fahrenheit above 85° Fahrenheit ambient. 10% for continuous duty.	1800	Remote
6-634	120/240	17.9	60	3	4	.8	6		1800	Remote
4.5-514*	120/240	19.4	50	1	4	1.0	4.5		1500	Remote
4.5-534	120/240	13.6	50	3	4	.8	4.5		1500	Remote

*Reconnectable to 120 Volts @ twice the amperage.

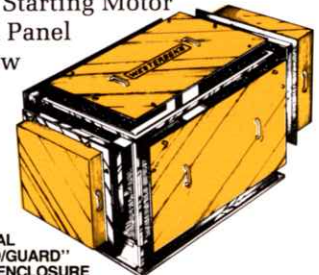


ENGINE

Engine Type 3 cyl, 4 cycle, water cooled, naturally aspirated, vertical overhead valve, diesel engine
 Bore & Stroke 2.56" x 3.07"
 Displacement 47.4 CID
 Compression Ratio 23 to 1
 Cooling water capacity 5 Qts.
 Fuel Injection Pump Bosch type with Individual plunger for each cylinder
 Injectors Pintle type
 Combustion Chamber Swirl type for easy starting and quiet operation
 Total weight 490 lbs
 Governor Mechanical centrifugal type
 Fuel filter Paper element type
 Lub. oil filter full flow, spin on, paper element type
 Lub. oil capacity with filter 3.3 Qts.
 Starting motor Geared electric motor, 12 Volt.
 Starting aid 12 Volt sheathed type glow plug
 Fuel pump Electric plunger type
 Rated RPM 1800
 Max. HP at rated RPM 12 HP
 Full load fuel consumption approx. 0.7 GPH
 Exhaust hose 1-7/8" I.D.
 Sea water hose 7/8" I.D.

STANDARD EQUIPMENT

12 volt 50 Ampere Alternator • Coolant recovery tank
 Fresh Water Cooling System • Operators Manual
 Air Intake Silencer • 12 Volt Starting Motor
 Vibration Isolators • Control Panel
 Water Injected Exhaust Elbow
 Drip Tray • Belt Guards



OPTIONAL EQUIPMENT

Hydro Hush Silencer • "Sound/Guard"
 Remote Instrument Panel • 15' Cable for Remote Panel
 Ship to Shore Transfer Switch

Contact your Westerbeke Representative

or Contact the . . .



J. H. WESTERBEKE CORP.

Avon Industrial Park, Avon, MA 02322, (617) 588-7700
 Cable: Westcorp, Avon, Telex: 92-4444