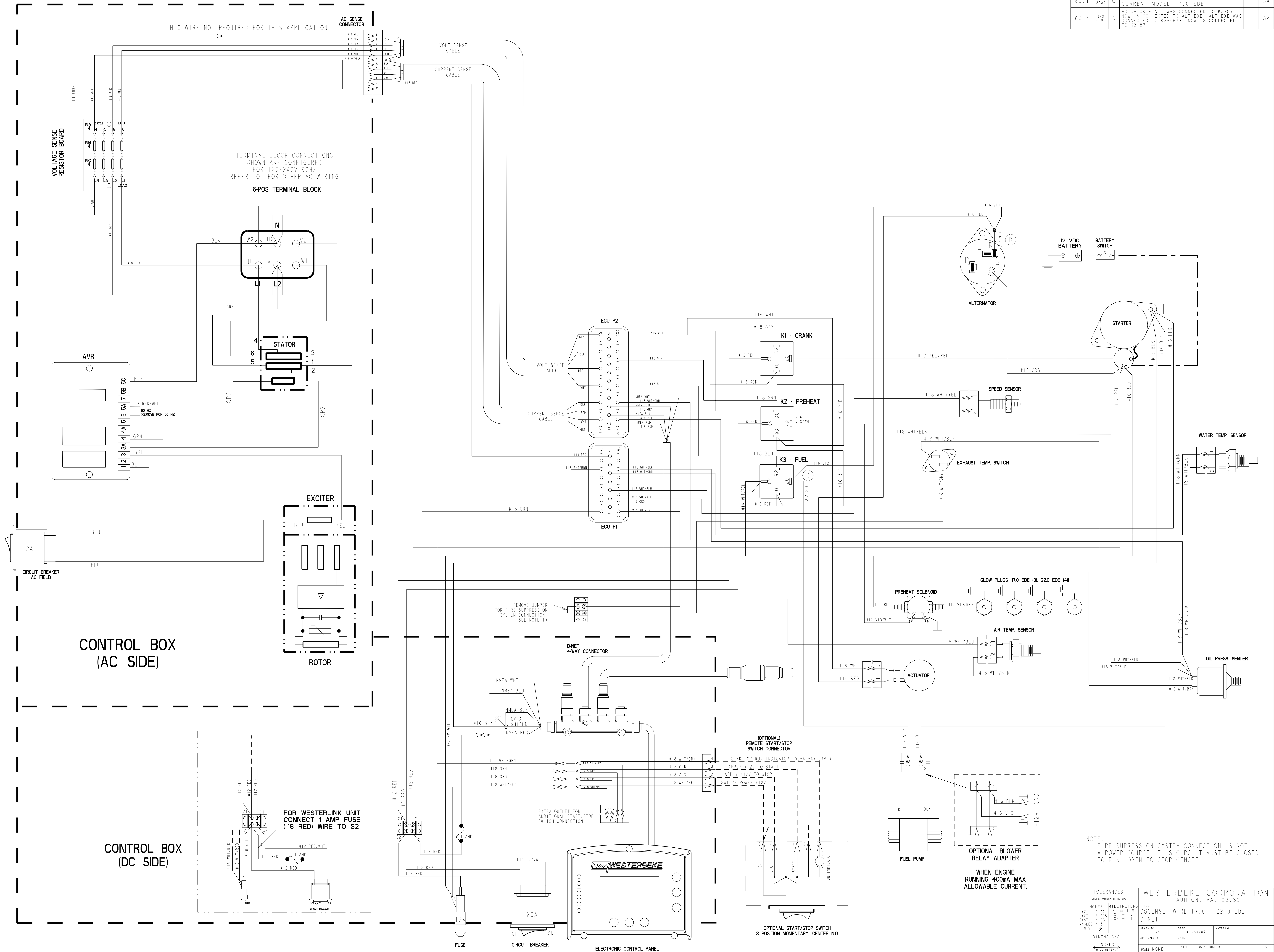


ECO NO.	DATE	REV.	REVISION RECORD	AUTH.	DR. BY
6425	12-12-2007	A	RELEASE PART FOR PRODUCTION.		GA
6510	5-8-2008	B	REMOVE 18-BLK BETWEEN P1-PIN 3 TO P3-PIN 10		GA
6601	7-11-2009	C	UPDATE TITLE BLOCK TO INCLUDE CURRENT MODEL: 17.0 EDE		GA
6614	8-2-2009	D	ACTUATOR PIN 1 WAS CONNECTED TO K3-B7. NOW IS CONNECTED TO ALT EXE; ALT EXE WAS CONNECTED TO K3-(87). NOW IS CONNECTED TO K3-B7.		GA



TOLERANCES (UNLESS OTHERWISE NOTED)		WESTERBEKE CORPORATION TAUNTON, MA. 02780	
INCHES	MILLIMETERS	FILE	DGGENSET WIRE 17.0 - 22.0 EDE
XX .02	XX ± 1.0	DRN	D-NET
XXX .005	XXX ± .5	DATE	14/Nov/207
FINISH	FINISH	SCALE	NONE
SIZE	SIZE	DRAWING NUMBER	E 53731
(WHEN APPLICABLE)	SHT. 1 OF 1	REV.	D