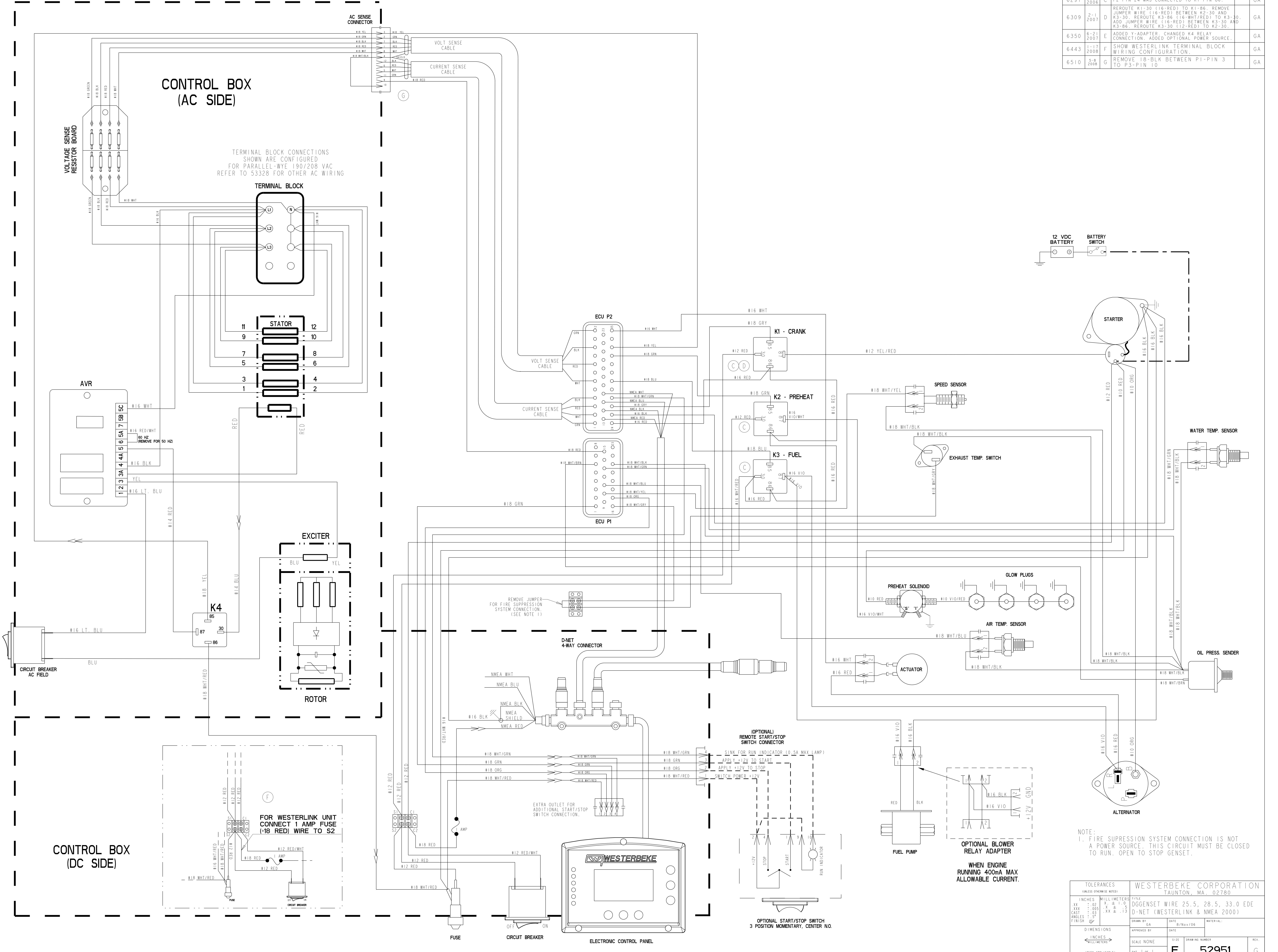


ECO NO.	DATE	REV.	REVISION RECORD	AUTH.	DR. BY
6282	11-9-2006	A	RELEASED TO SYSTEM.		GA
6289	12-8-2006	B	ADDED 1 AMP FUSE, FIRE SUPPRESSION SYSTEM AND TERMINAL STRIPS TO THE WIRING DIAGRAM. ADDED OPTIONAL REMOTE S/S CONNECTION.		GA
6297	1-9-2006	C	P2-PIN 24 WAS CONNECTED TO K1-PIN 86.		GA
6309	2-1-2007	D	REROUTE K1-30 (16-RED) TO K1-86. REMOVE JUMPER WIRE (16-RED) BETWEEN K2-30 AND K3-30. REROUTE K3-86 (16-WHT/RED) TO K3-30. ADD JUMPER WIRE (16-RED) BETWEEN K3-30 AND K3-86. REROUTE K3-30 (12-RED) TO K2-30.		GA
6350	6-21-2007	E	ADDED Y-ADAPTER. CHANGED K4 RELAY CONNECTION. ADDED OPTIONAL POWER SOURCE.		GA
6443	1-17-2008	F	SHOW WESTERLINK TERMINAL BLOCK WIRING CONFIGURATION.		GA
6510	5-8-2008	G	REMOVE 18-BLK BETWEEN P1-PIN 3 TO P3-PIN 10.		GA



NOTE:
1. FIRE SUPPRESSION SYSTEM CONNECTION IS NOT A POWER SOURCE. THIS CIRCUIT MUST BE CLOSED TO RUN. OPEN TO STOP GENSET.

TOLERANCES (UNLESS OTHERWISE NOTED)		WESTERBEKE CORPORATION TAUNTON, MA. 02780	
INCHES	MILLIMETERS	FILE	
.XX	.02	X	± 1.0
.XX	.005	X	± .5
CAST	.005	XX	± 1.3
ANGLE	.02		
FINISH	.02		
DIMENSIONS		APPROVED BY	DATE
SCALE NONE		GA	8/Nov/06
SIZE		DRAWING NUMBER	
SHEET 1 OF 1		E 52951	