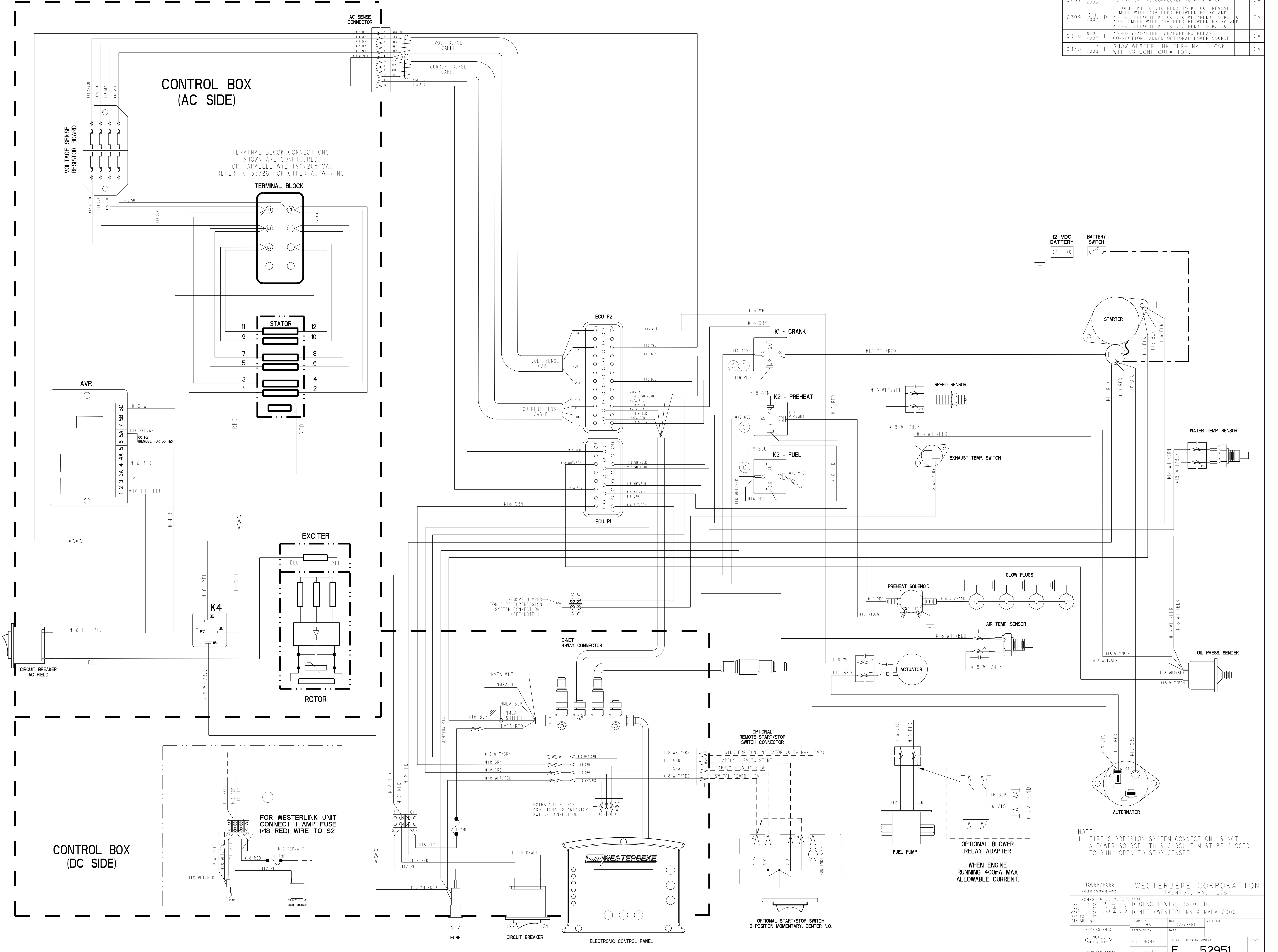


ECO NO.	DATE	REV.	REVISION RECORD	AUTH.	DR. BY
6282	11-9-2006	A	RELEASED TO SYSTEM.		
6289	12-8-2006	B	ADDED 1 AMP FUSE, FIRE SUPPRESSION SYSTEM AND TERMINAL STRIPS TO THE WIRING DIAGRAM. ADDED OPTIONAL REMOTE S/S CONNECTION		GA
6297	1-9-2006	C	P2-PIN 24 WAS CONNECTED TO K1-PIN 86.		GA
6309	2-1-2007	D	REROUTE K1-30 (16-RED) TO K1-86. REMOVE JUMPER WIRE (16-RED) BETWEEN K2-30 AND K3-30. REROUTE K3-86 (16-WHT/RED) TO K3-30. ADD JUMPER WIRE (16-RED) BETWEEN K3-30 AND K3-86. REROUTE K3-30 (12-RED) TO K2-30.		GA
6350	6-21-2007	E	ADDED Y-ADAPTER, CHANGED K4 RELAY CONNECTION. ADDED OPTIONAL POWER SOURCE.		GA
6443	1-17-2008	F	SHOW WESTERLINK TERMINAL BLOCK WIRING CONFIGURATION.		GA



TOLERANCES (UNLESS OTHERWISE NOTED)		WESTERBEKE CORPORATION TAUNTON, MA. 02780	
INCHES	MILLIMETERS	FILE	
.XX	.02	X	± 1.0
.XX	.005	X	± .5
CAST	.005	XX	± 1.3
ANGLE	.02		
FINISH	.02		
DIMENSIONS		APPROVED BY	DATE
SCALE NONE		GA	8/Nov/06
INCHES		SIZE	DRAWING NUMBER
MILLIMETERS		E	52951
(WHEN APPLICABLE)		SHT. 1 OF 1	REV. F