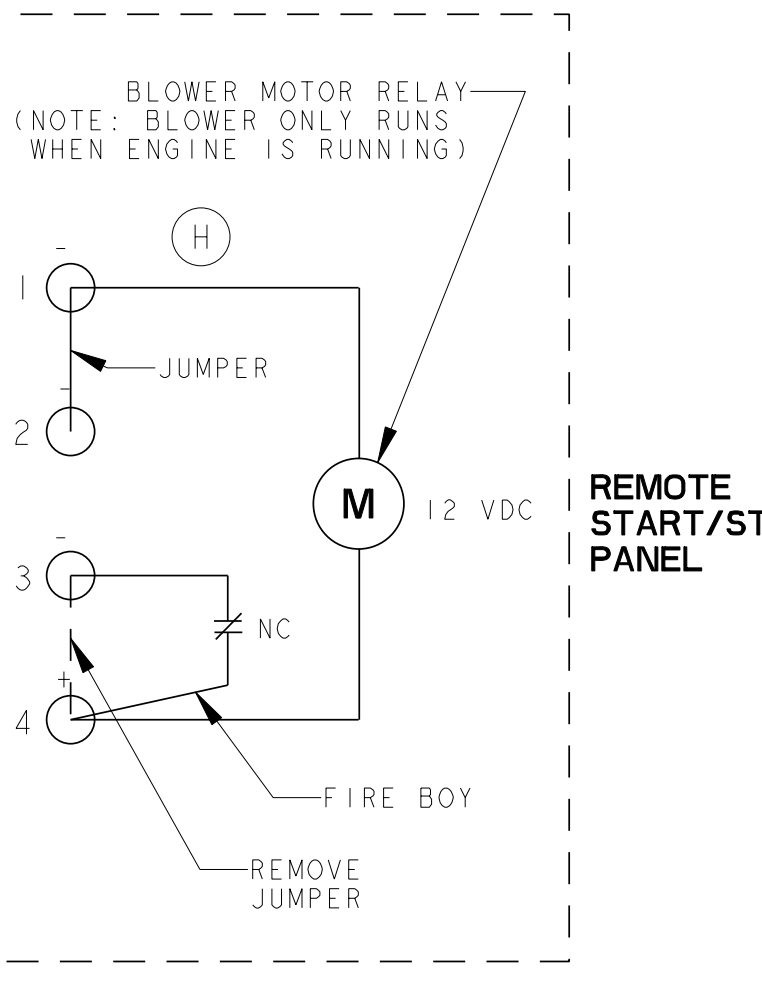
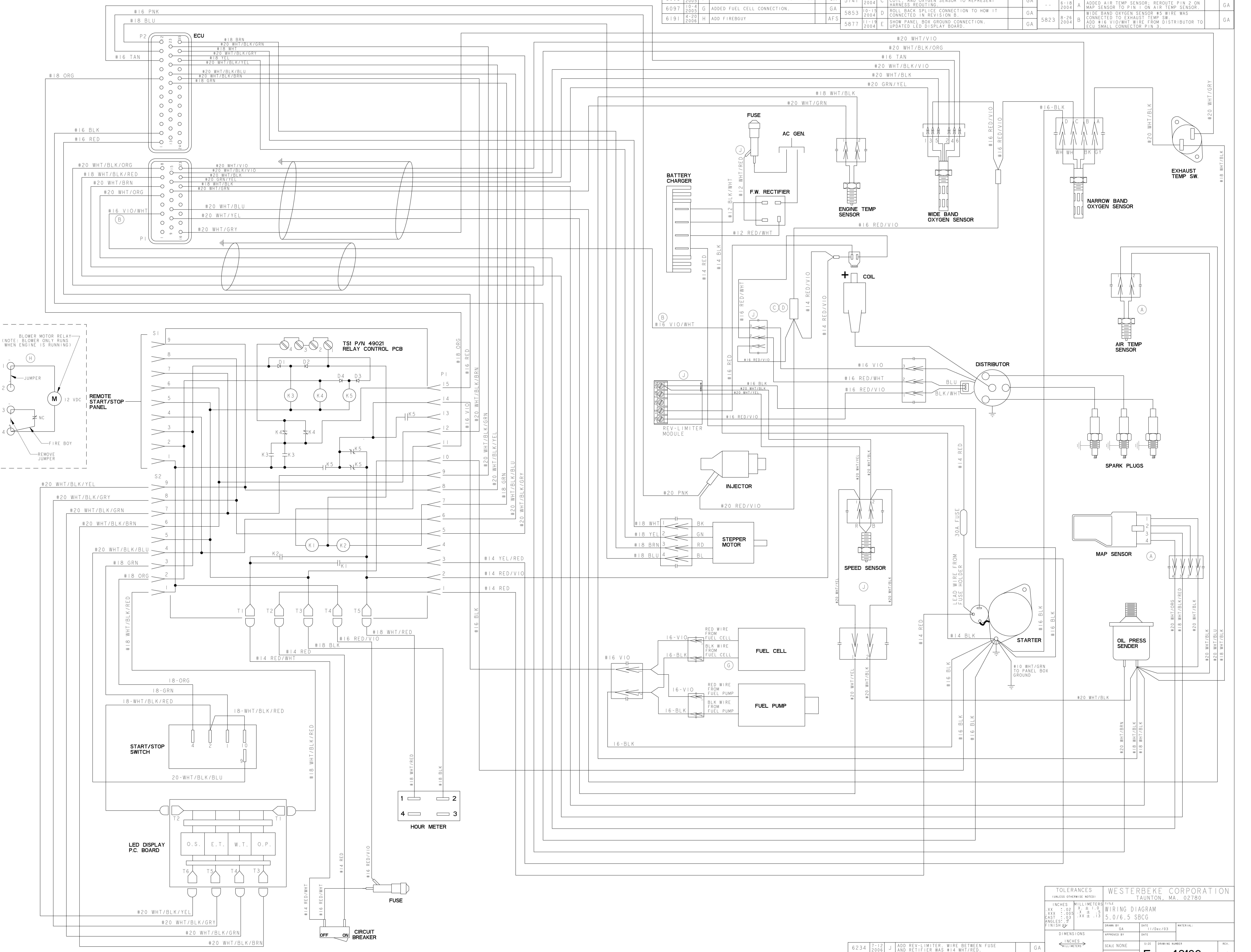


ECO NO.	DATE	REV.	REVISION RECORD	AUTH.	DR. BY
5908	1-7-2005	F	UPDATED HOUR METER WITH 4 TERMINALS.	GA	5741
6097	10-4-2005	G	ADDED FUEL CELL CONNECTION.	GA	5853
6191	4-20-2006	H	ADD FIREBURY	AFS	5877
		C	REDRAW SPLICE CONNECTION FOR INJECTOR, COIL, AND OXYGEN SENSOR TO REPRESENT HARNESS ROUTING.	GA	5741
		D	ROLL BACK SPLICE CONNECTION TO HOW IT CONNECTED IN REVISION B.	GA	5853
		E	SHOW PANEL BOX GROUND CONNECTION. UPDATED LED DISPLAY BOARD.	GA	5877
		A	ADDED AIR TEMP SENSOR; REROUTE PIN 2 ON MAP SENSOR TO PIN 1 ON AIR TEMP SENSOR.	GA	5823
		B	WIDE BAND OXYGEN SENSOR #5 WIRE WAS CONNECTED TO EXHAUST TEMP SW. ADD #16 VIO/WHT WIRE FROM DISTRIBUTOR TO ECU SMALL CONNECTOR PIN 3.	GA	5823



TOLERANCES (UNLESS OTHERWISE NOTED)		WESTERBEKE CORPORATION TAUNTON, MA. 02780	
INCHES	MILLIMETERS	FIT	WIRING DIAGRAM
.XX ± .00	.X ± .1		5.0/6.5 SBCG
.XXX ± .005	.XX ± .13		
CST ± .03			
FINISH			
DIMENSIONS		DATE	MATERIAL
INCHES	MILLIMETERS	11/Dec/03	
(WHEN APPLICABLE)		APPROVED BY	SCALE NONE
			SIZE DRAWING NUMBER
			SHT. 1 OF 1
			49166

ECO NO.	DATE	REV.	REVISION RECORD	AUTH.	DR. BY
6234	7-12-2006	J	ADD REV-LIMITER WIRE BETWEEN FUSE AND RECTIFIER WAS #14 WHT/RED.	GA	