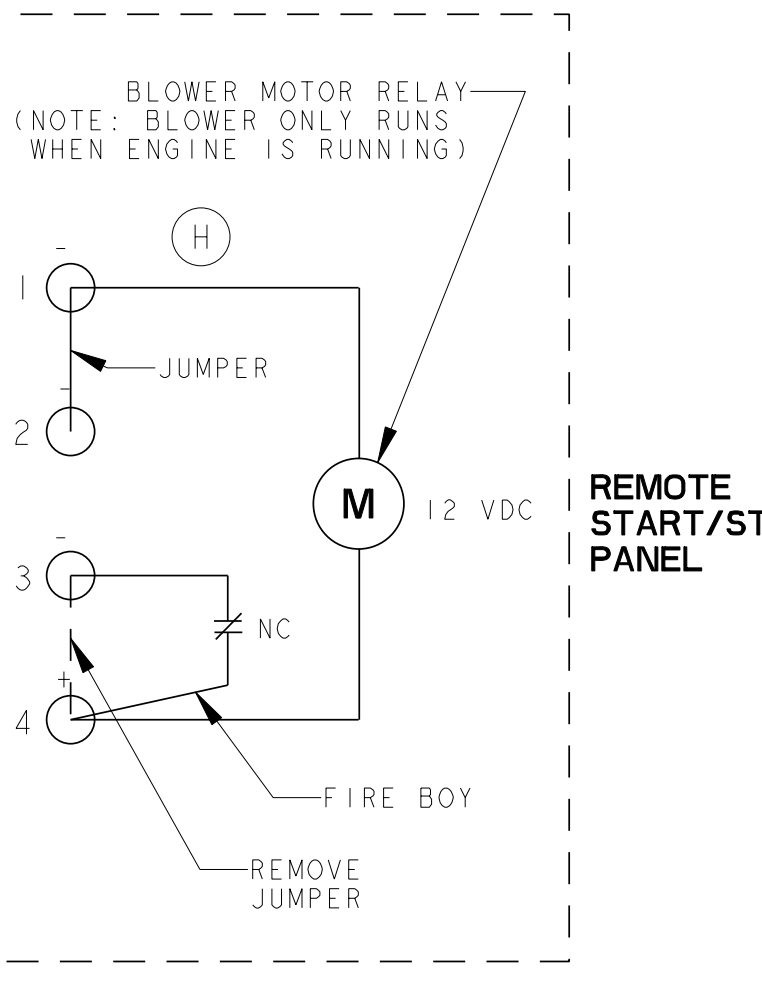
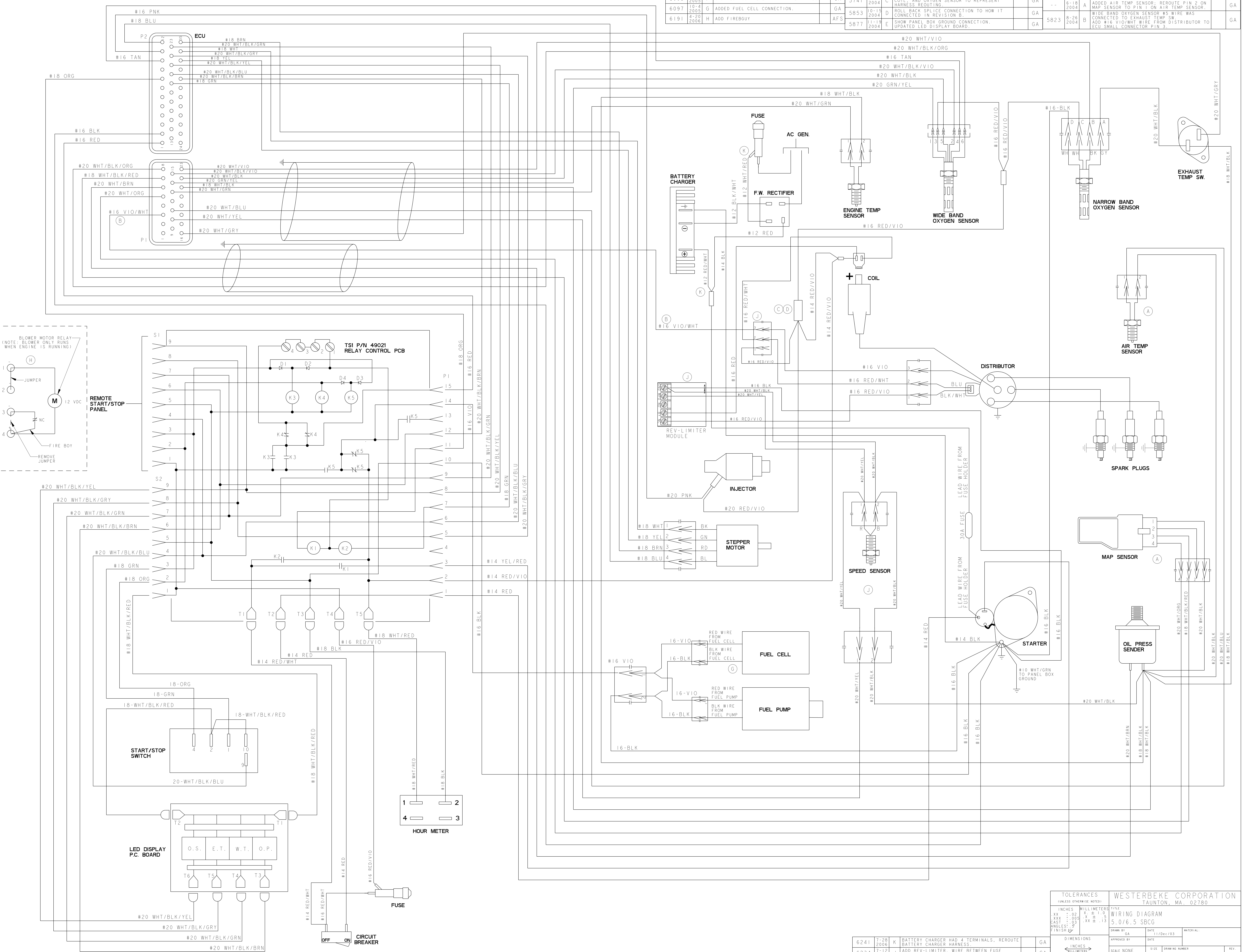


ECO NO.	DATE	REV.	REVISION RECORD	AUTH.	DR. BY
5908	1-7-2005	F	UPDATED HOUR METER WITH 4 TERMINALS.	GA	5741
6097	10-4-2005	G	ADDED FUEL CELL CONNECTION.	GA	5853
6191	4-20-2006	H	ADD FIREBURY	AFS	5877
5741	10-5-2004	C	REDRAW SPLICE CONNECTION FOR INJECTOR, COIL, AND OXYGEN SENSOR TO REPRESENT HARNESS ROUTING.	GA	5823
5853	10-15-2004	D	ROLL BACK SPLICE CONNECTION TO HOW IT CONNECTED IN REVISION B.	GA	
5877	11-19-2004	E	SHOW PANEL BOX GROUND CONNECTION. UPDATED LED DISPLAY BOARD.	GA	
5823	6-18-2004	A	ADDED AIR TEMP SENSOR; REROUTE PIN 2 ON MAP SENSOR TO PIN 1 ON AIR TEMP SENSOR.	GA	
5823	8-26-2004	B	WIDE BAND OXYGEN SENSOR #5 WIRE WAS CONNECTED TO EXHAUST TEMP SW. ADD #16 VIO/WHT WIRE FROM DISTRIBUTOR TO ECU SMALL CONNECTOR PIN 3.	GA	



TOLERANCES (UNLESS OTHERWISE NOTED)		WESTERBEKE CORPORATION TAUNTON, MA. 02780	
INCHES	MILLIMETERS	TITLE	DATE
.XX ± .00	X ± .10	WIRING DIAGRAM	11/Dec/03
.XXX ± .005	.X ± .5	5.0/6.5 SBCG	
CST ± .03	.XX ± .13		
FINISH			
DIMENSIONS (WHEN APPLICABLE)		SCALE NONE	SIZE DRAWING NUMBER
APPROVED BY		DATE	
DATE		REV.	
ECO NO.	DATE	REV.	REVISION RECORD
6241	7-28-2006	K	BATTERY CHARGER HAD 4 TERMINALS, REROUTE BATTERY CHARGER HARNESS.
6234	7-13-2006	J	ADD REV-LIMITER WIRE BETWEEN FUSE AND RECTIFIER WAS #14 WHT/RED.
6241	7-28-2006	K	BATTERY CHARGER HAD 4 TERMINALS, REROUTE BATTERY CHARGER HARNESS.
6234	7-13-2006	J	ADD REV-LIMITER WIRE BETWEEN FUSE AND RECTIFIER WAS #14 WHT/RED.

ECO NO.	DATE	REV.	REVISION RECORD	AUTH.	DR. BY
6241	7-28-2006	K	BATTERY CHARGER HAD 4 TERMINALS, REROUTE BATTERY CHARGER HARNESS.	GA	
6234	7-13-2006	J	ADD REV-LIMITER WIRE BETWEEN FUSE AND RECTIFIER WAS #14 WHT/RED.	GA	

49166