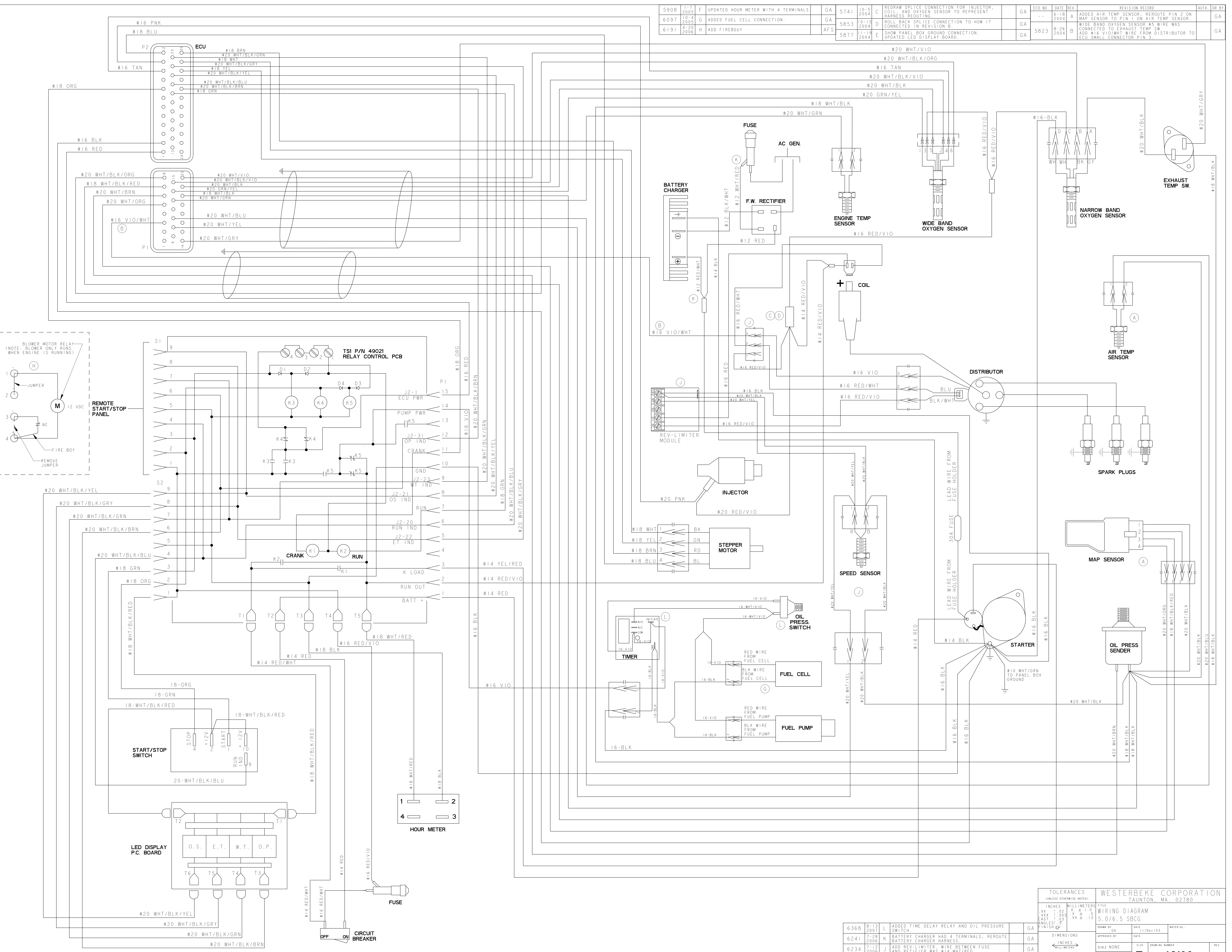


ECO NO.	DATE	REV.	DESCRIPTION	GA	ECO NO.	DATE	REV.	DESCRIPTION	GA
5908	1-7-2005	F	UPDATED HOUR METER WITH 4 TERMINALS.	GA	5741	10-5-2004	C	REDRAW SPLICE CONNECTION FOR INJECTOR, COIL, AND OXYGEN SENSOR TO REPRESENT HARNESS ROUTING.	GA
6097	10-4-2005	G	ADDED FUEL CELL CONNECTION.	GA	5853	10-15-2004	D	ROLL BACK SPLICE CONNECTION TO HOW IT CONNECTED IN REVISION B.	GA
6191	4-20-2006	H	ADD FIREGUY	AFS	5877	11-19-2004	E	SHOW PANEL BOX GROUND CONNECTION. UPDATED LED DISPLAY BOARD.	GA



TOLERANCES (UNLESS OTHERWISE NOTED)
 INCHES MILLIMETERS
 .XX ± .02 X ± 1.0
 .XXX ± .005 X ± .5
 CAST ± .01 X ± .5
 FINISH ± .005 X ± .5
 ANGLE ± .5

WESTERBEKE CORPORATION
 TAUNTON, MA 02780

WIRING DIAGRAM
 5.0/6.5 SBCG

ECO NO.	DATE	REV.	DESCRIPTION	GA
6368	8-13-2007	L	ADDED TIME DELAY RELAY AND OIL PRESSURE SWITCH.	GA
6241	7-28-2006	K	BATTERY CHARGER HAD 4 TERMINALS. REROUTE BATTERY CHARGER HARNESS.	GA
6234	7-12-2006	J	ADD REV-LIMITER WIRE BETWEEN FUSE AND RECTIFIER WAS #14 WHT/RED.	GA

REVISION RECORD
 AUTH. DR. BY
 DIMENSIONS
 SCALE NONE
 SIZE DRAWING NUMBER
 SHEET 1 OF 1
 REV. E
 49166