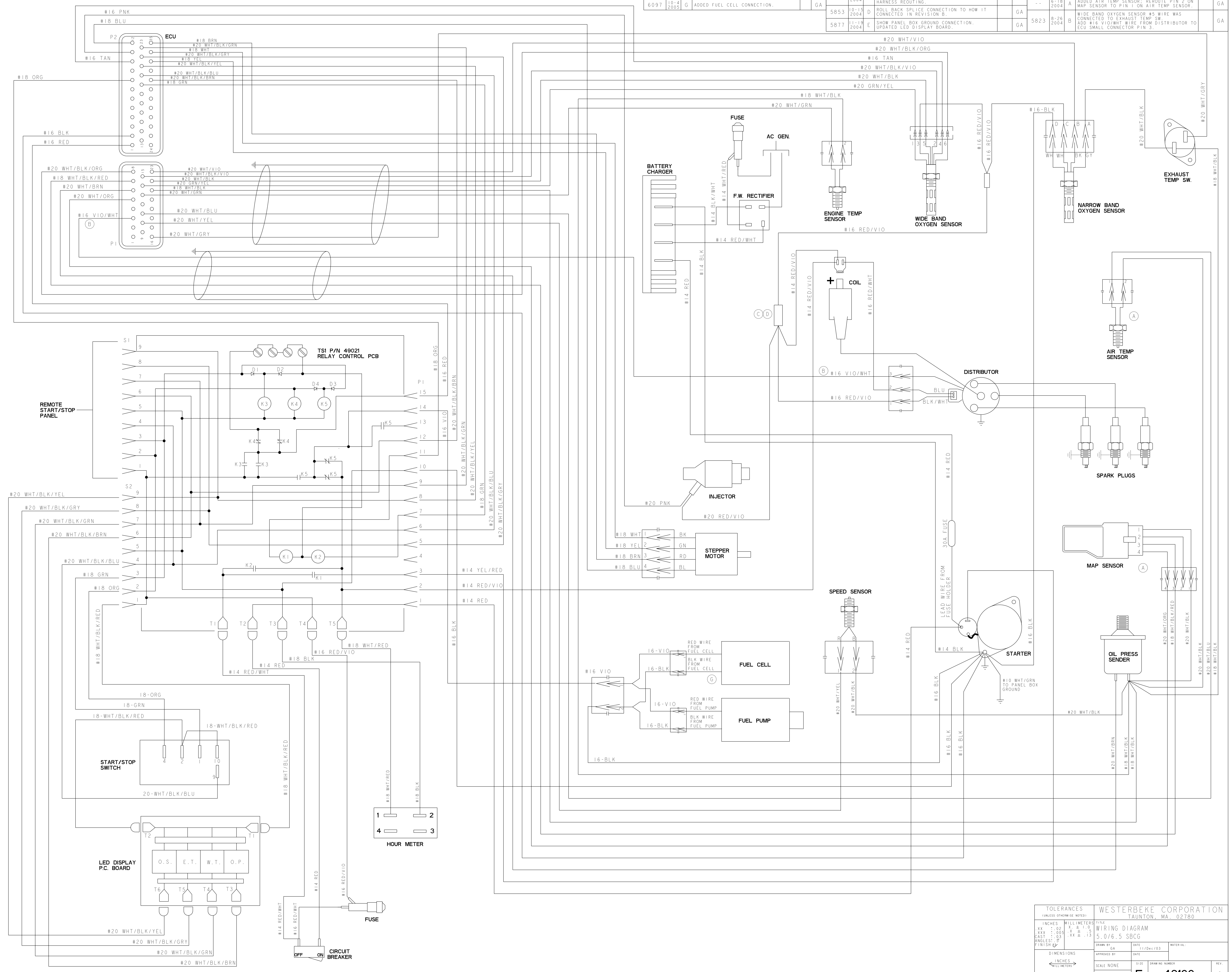


5908	11-7-2005	F	UPDATED HOUR METER WITH 4 TERMINALS	GA	5741	10-5-2004	C	REDRAW SPLICE CONNECTION FOR INJECTOR, COIL, AND OXYGEN SENSOR TO REPRESENT HARNESS ROUTING.	GA	ECO NO.	DATE	REV.	REVISION RECORD	AUTH.	DR. BY
6097	10-4-2005	G	ADDED FUEL CELL CONNECTION.	GA	5853	10-15-2004	D	ROLL BACK SPLICE CONNECTION TO HOW IT CONNECTED IN REVISION B.	GA	5823	6-18-2004	A	ADDED AIR TEMP SENSOR; REROUTE PIN 2 ON MAP SENSOR TO PIN 1 ON AIR TEMP SENSOR.	GA	
					5877	11-19-2004	E	SHOW PANEL BOX GROUND CONNECTION. UPDATED LED DISPLAY BOARD.	GA		8-26-2004	B	WIDE BAND OXYGEN SENSOR #5 WIRE WAS CONNECTED TO EXHAUST TEMP SW. ADD #16 VIO/WHT WIRE FROM DISTRIBUTOR TO ECU SMALL CONNECTOR PIN 3.	GA	



TOLERANCES (UNLESS OTHERWISE NOTED):		WESTERBEKE CORPORATION TAUNTON, MA. 02780	
INCHES	MILLIMETERS	TITLE	DATE
.XX ± .00	.X ± .1	WIRING DIAGRAM	11/Dec/03
.XXX ± .00	.X ± .5	5.0/6.5 SBCG	
EAST ± .03	.XX ± .13		
FINISH: 2			
DIMENSIONS	APPROVED BY	DATE	MATERIAL
INCHES	SCALE NONE		
(WHEN APPLICABLE)	SHT. 1 OF 1	E	49166