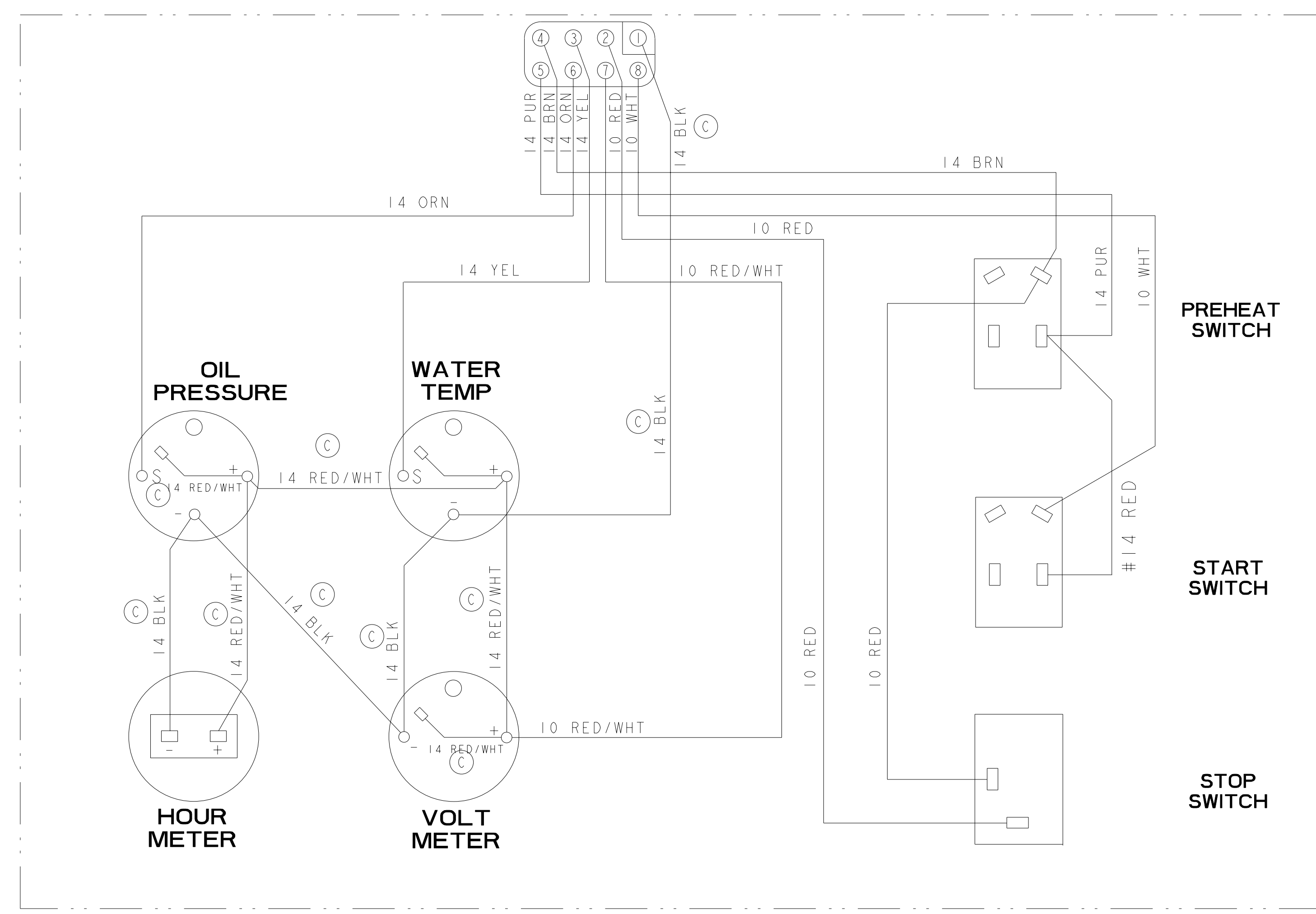
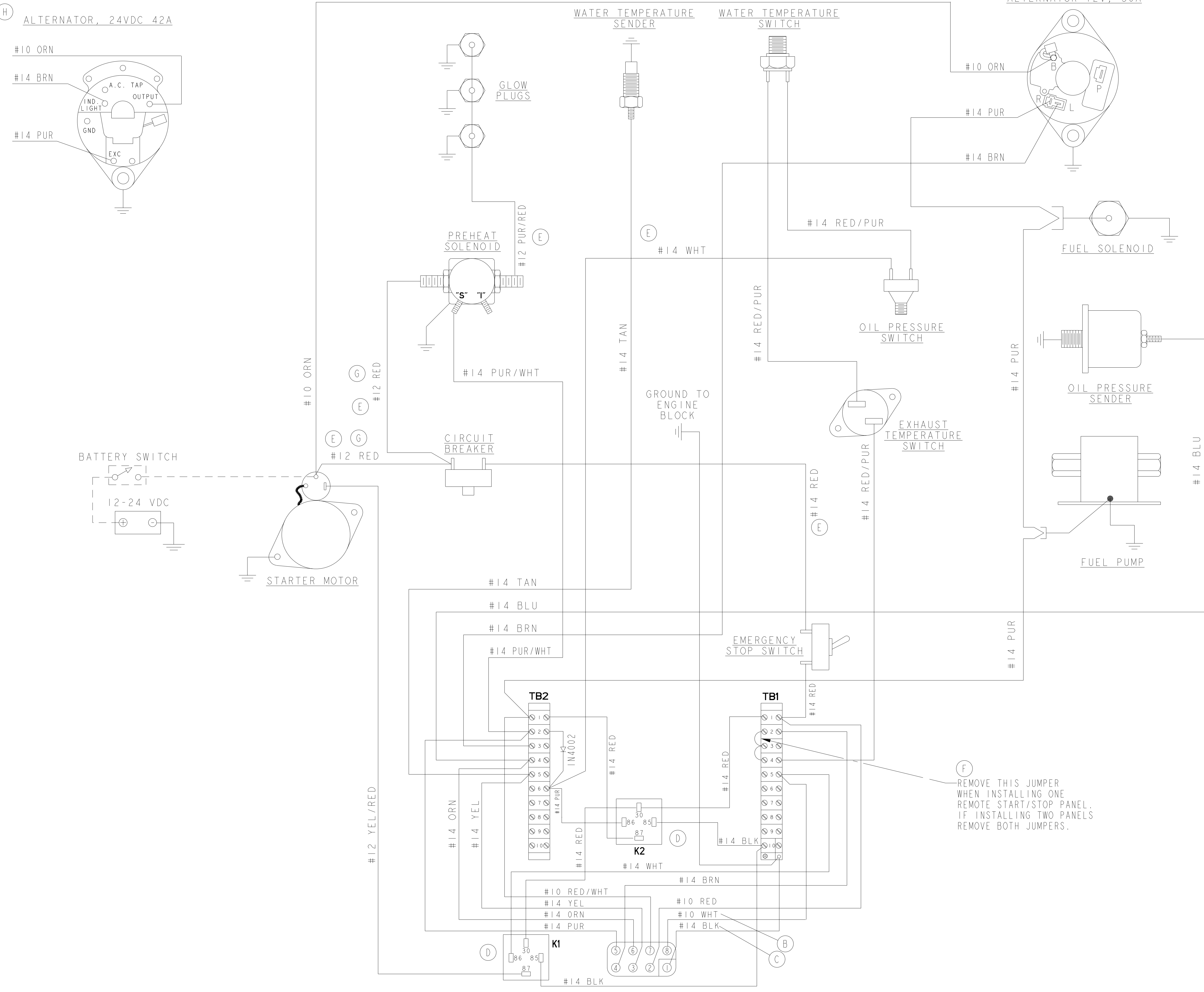
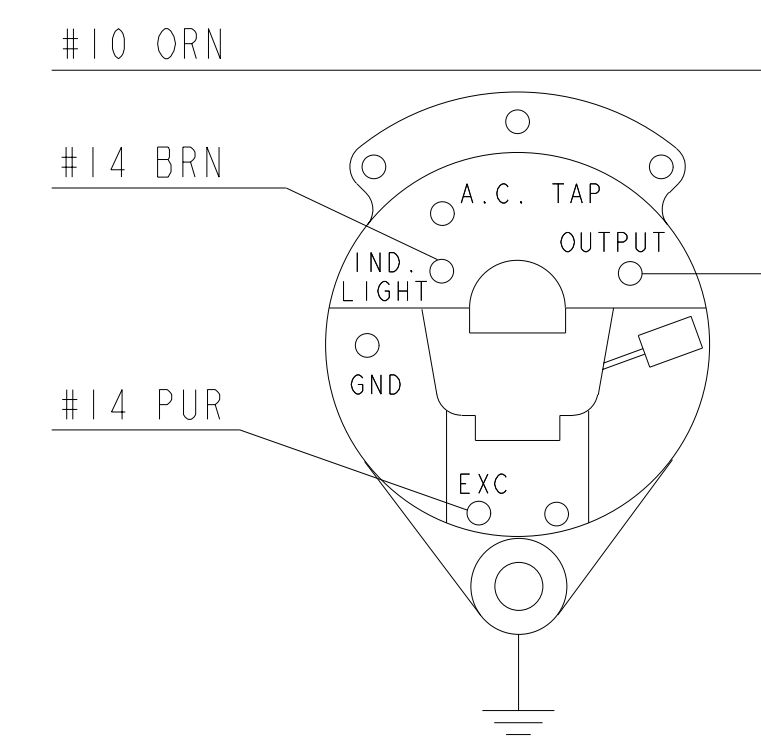
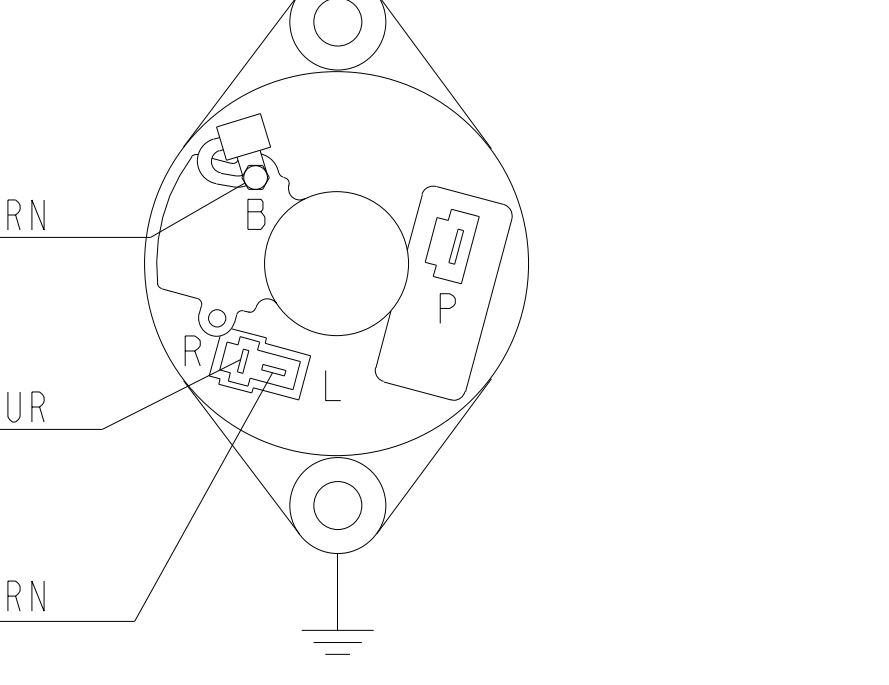


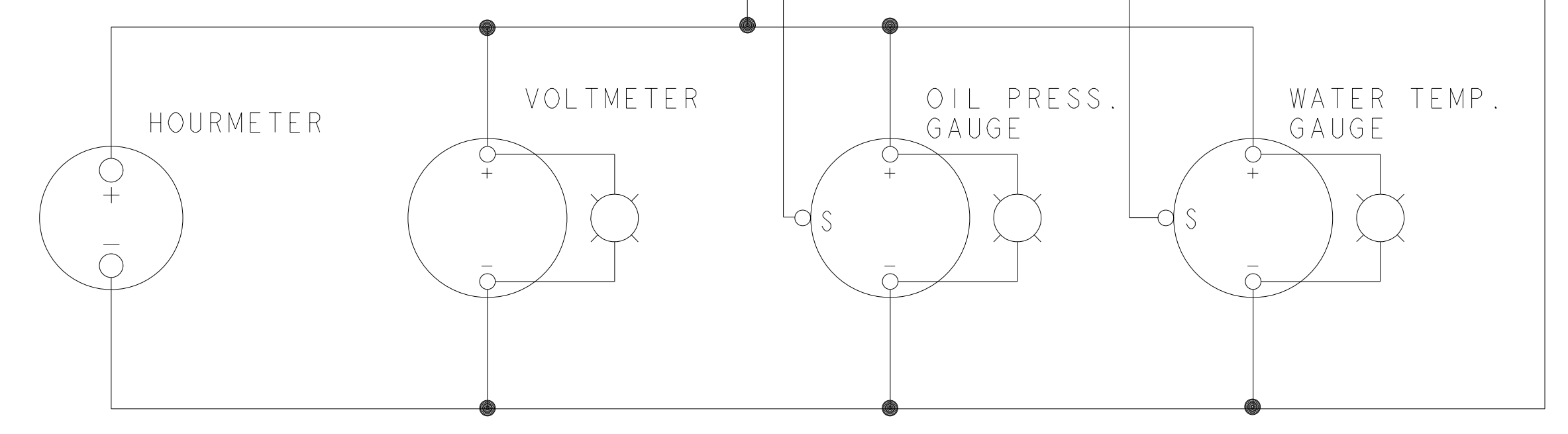
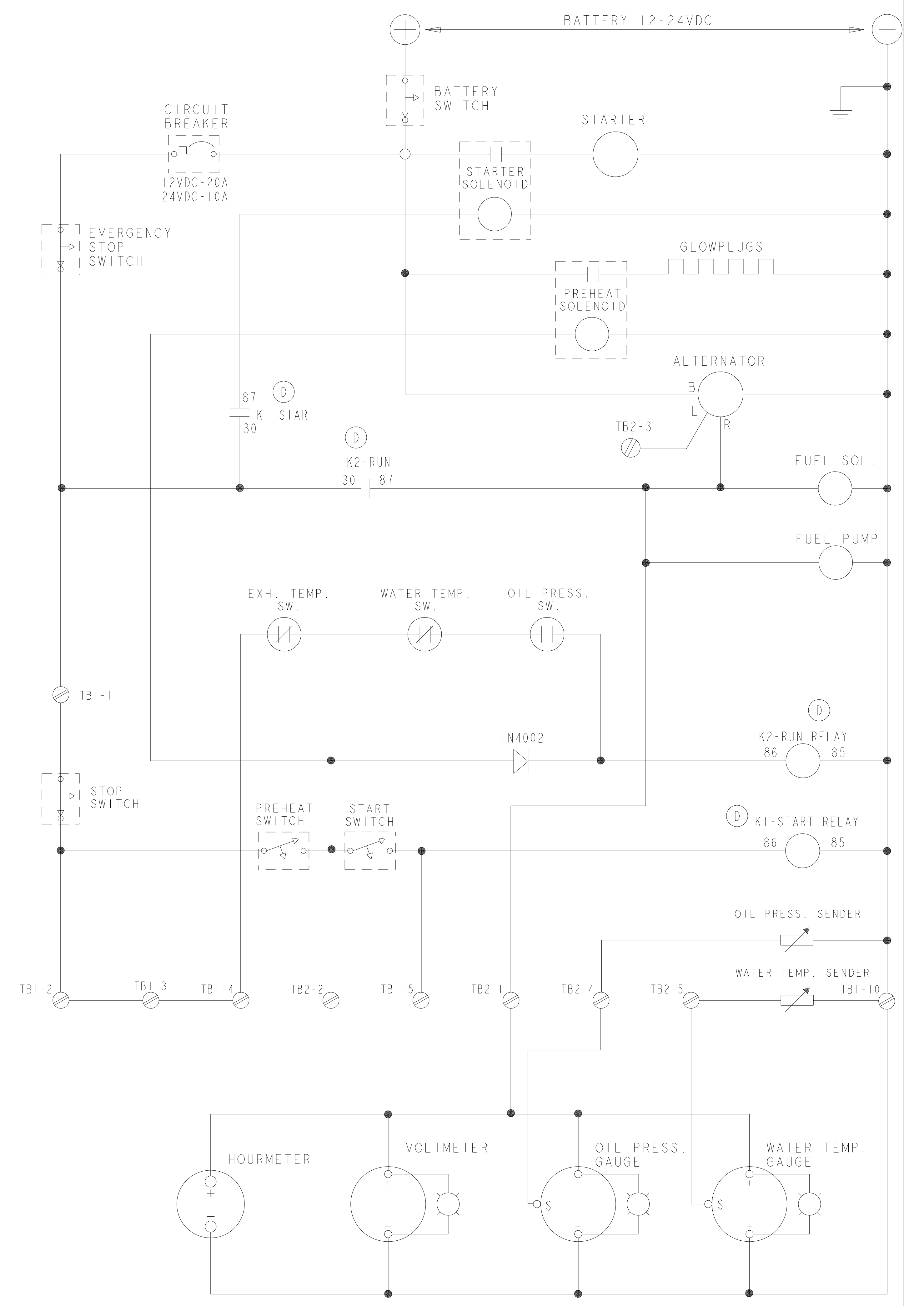
ALTERNATOR, 24VDC 42A



ALTERNATOR 12V, 50A



ECO NO.	DATE	REV.	REVISION RECORD	AUTH.	DR. BY
2196	8-19-93	A	TERMINAL BLOCK TB1 WAS A 4 POSITION BLOCK AND TB2 WAS A FIVE POSITION BLOCK. NOW BOTH BLOCKS ARE 10 POSITION BLOCKS.		WRM
3095	10-23-94	B	#14GA. WIRE FROM RELAY TO TERMINAL BLK. 1 CHANGED TO #10GA. WIRE.		MRW
3111	11-28-96	C	MODIFY TO CURRENT STANDARDS.		BRN
3285	2-2-98	D	ADDED 2 RELAYS. REDRAWN SCHEMATIC TO CLARIFY TERMINAL CONNECTIONS.		BRN
3777	8-14-98	E	WIRE #14 RED WAS #12 RED. WIRE #12 PUR/PUR WAS #12 RED. ADDED WIRE COLOR #14 WHT.		EN
3855	9-24-98	F	ADDED AND EDITED NOTES ON DRAWING.		MM
3855	4-13-99	G	CHANGED WIRE SIZES TO #12 FROM #14.		JCC
4692	8-14-00	H	ADDED 24 VOLT ALTERNATOR SHOWN.		CS



TOLERANCES (UNLESS OTHERWISE NOTED)		WESTERBEKE CORPORATION AVON, MA. 02322	
INCHES	MILLIMETERS	TITLE	
XX : .02	X : .1	WIRING DIAGRAM AND SCHEMATIC	
XX : .005	XX : .02	8.0, 10.0, 11.0 BTD AND 12.5 BTD	
CAST : .03		DRAWN BY	DATE
FINISH : .02		JU	4/Moy/87
DIMENSIONS		APPROVED BY	DATE
INCHES	MILLIMETERS		
(WHEN APPLICABLE)		SCALE	SHEET NUMBER
		E	36412
		SHT. 1 of 1	REV. H