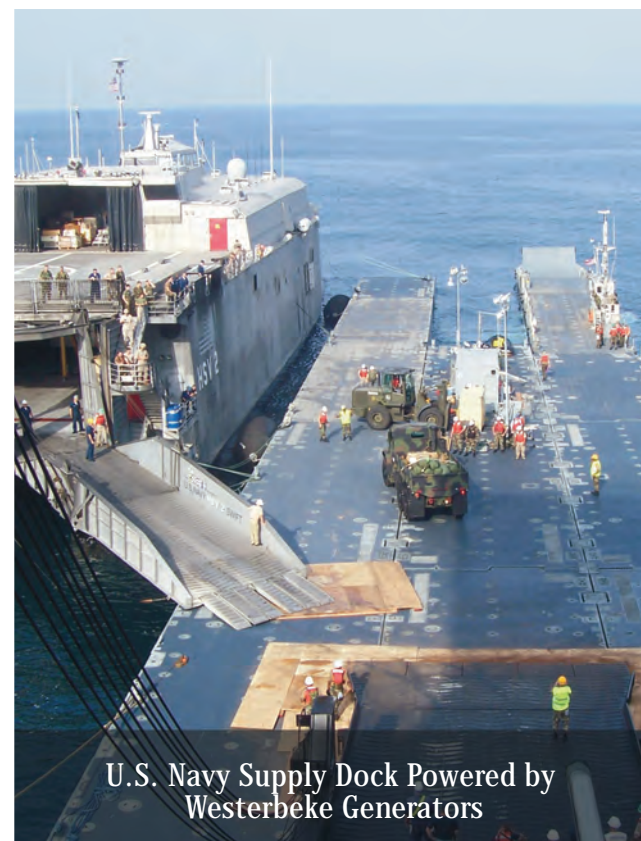


## generator design specifications

Generator Model, 60Hz (50Hz)	5.5 BCDR (5.0 BCDR)	7.6 BTDR (5.7 BTDR)	8.0 BTDAR (6.0 BTDAR)	10.0 BTDAR (7.5 BTDAR)	11.0 BTDR (8.9 BTDR)
Generator power @ 1800 (1500) rpm	5.5kW (5.0kW)	7.6kW (5.7kW)	8.0kW (6.0kW)	10.0kW (7.5kW)	11.0kW (8.9kW)
Amperage, 1 phase, 60Hz (50Hz)	45.8 (21.7)	63.3/31.7 (24.8)	66.7/33.3 (26.1)	83.3/41.7 (32.6)	91.7/45.8 (38.7)
Voltage regulator (type)	Capacitor	Transformer			
Voltage regulation, no load-full load, +/-	5%				
Governor type	Built-in, mechanical				External, electronic
Frequency regulation, no load-full load	3.0 Hz (5%)				0.5Hz (.6%)
Cylinders	3				
Cycles	4				
Displacement - cu.in. (liters)	58.09 (.952)	58.09 (.952)	80.43 (1.318)	80.43 (1.318)	80.43 (1.318)
Bore and stroke - in. (mm)	2.99 x 2.76 (75.9 x 70.0)	2.99 x 2.76 (75.9 x 70.0)	3.07 x 3.62 (78.0 x 92.0)	3.07 x 3.62 (78.0 x 92.0)	3.07 x 3.62 (78.0 x 92.0)
Cylinder head/block	Cast iron				
Crankshaft	Forged crankshaft, four main bearings				
Fuel system	Self-bleeding				
Fuel injection pump	Bosch type, solenoid shut-off				
Fuel supply and return piping - in. (mm)	1/4 (6.35) I.D. minimum, 3/8 (9.53) I.D. maximum				
Fuel filter	Replaceable element				
Cooling system	Radiator				
Cooling capacity - qts. (liters)	6.0 (5.5)	6.0 (5.5)	8.0 (7.6)	8.0 (7.6)	8.0 (7.6)
Exhaust manifold	Dry (wet optional)				
Lubricant capacity - quarts (liters)	3.2 (3.0)	3.8 (3.6)	4.0 (3.8)	4.0 (3.8)	4.0 (3.8)
Oil fill	Top & side				
Lube oil filter	Spin-on, disposable				
Battery charging alternator	N/A, 10 amp regulator	50 amp			
Starting aid	12 V, sheathed type glow plug				
Cold cranking amps	190	190	240	240	240
Start	Local or optional remote				
Maximum angle of continuous operation	25 degrees		15 degrees		
Dry weight - lbs. (kgs.)	411 (186.4)	450 (204.1)	511 (231.8)	560 (254.0)	560 (254.0)
Generator Dims. - LxWxH Inches	33.9 x 17.4 x 24.2	34.4 x 18.5 x 24.2	34.6 x 20.0 x 26.1	37.7 x 20.0 x 26.1	37.7 x 20.0 x 26.1
Generator Dims. - LxWxH Millimeters	861 x 442 x 615	874 x 470 x 615	879 x 508 x 663	958 x 508 x 663	958 x 508 x 663

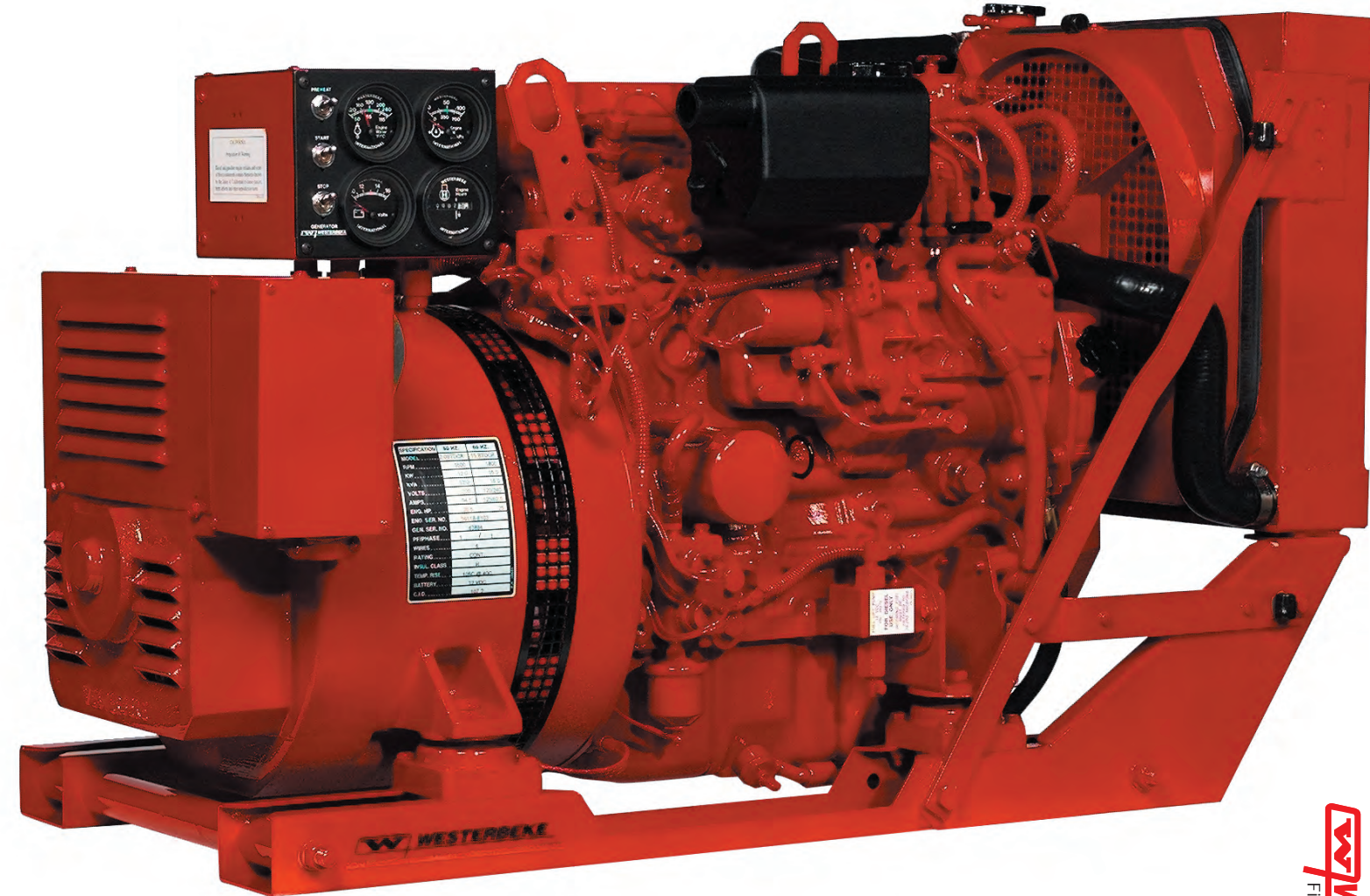
Generator Model, 60Hz (50Hz)	12.5 BTDBR (9.4 BTDBR)	15.0 BTDCR (12.0 BTDCR)
Generator power @ 1800 (1500) rpm	12.5kW (9.4kW)	15.0kW (12.0kW)
Amperage, 1 phase, 60Hz (50Hz)	104.2/52.1 (40.9)	125.0/62.5 (52.2)
Voltage regulator (type)	Transformer	
Voltage regulation, no load-full load, +/-	5%	
Governor (type)	Built-in, mechanical	
Frequency regulation, no load-full load	3.0 Hz (5%)	
Cylinders	4	
Cycles	4	
Displacement - cu.in. (liters)	107.27 x (1.758)	107.27 x (1.758)
Bore and stroke - in. (mm)	3.07 x 3.62 (78.0 x 92.0)	3.07 x 3.62 (78.0 x 92.0)
Cylinder head/block	Cast iron	
Crankshaft	Forged crankshaft, five main bearings	
Fuel system	Self-bleeding	
Fuel injection pump	Bosch type, solenoid shut-off	
Fuel supply and return piping - in. (mm)	1/4 (6.35) I.D. minimum, 3/8 (9.53) I.D. maximum	
Fuel filter	Replaceable element	
Cooling system	Radiator	
Cooling capacity - qts. (liters)	8.3 (7.8)	8.3 (7.8)
Exhaust manifold	Dry (wet optional)	
Lubricant capacity - quarts (liters)	5.5 (5.2)	5.5 (5.2)
Oil fill	Top & side	
Lube oil filter	Spin-on, disposable	
Battery charging alternator	50 amp	
Starting aid	12 V, sheathed type glow plug	
Cold cranking amps	270	270
Start	Local or optional remote	
Maximum angle of continuous operation	15 degrees	
Dry weight - lbs. (kgs.)	607 (275.3)	615 (279.0)
Generator Dims. - LxWxH Inches	41.2 x 20.0 x 26.1	41.2 x 20.0 x 26.1
Generator Dims. - LxWxH Millimeters	1047 x 508 x 663	1047 x 508 x 663



U.S. Navy Supply Dock Powered by Westernbeke Generators

# WESTERBEKE™

## Fire-Rescue Generators



## Fire-Rescue Mobile-Industrial

**WESTERBEKE™**  
 WESTERBEKE CORPORATION • MYLES STANDISH INDUSTRIAL PARK  
 150 JOHN HANCOCK ROAD, TAUNTON, MA 02780-7319 U.S.A.  
 TEL. (508)823-7677 • FAX (508)884-9688 • WEBSITE: WWW.WESTERBEKE.COM



# Proven in Over 70 Years of Marine Service

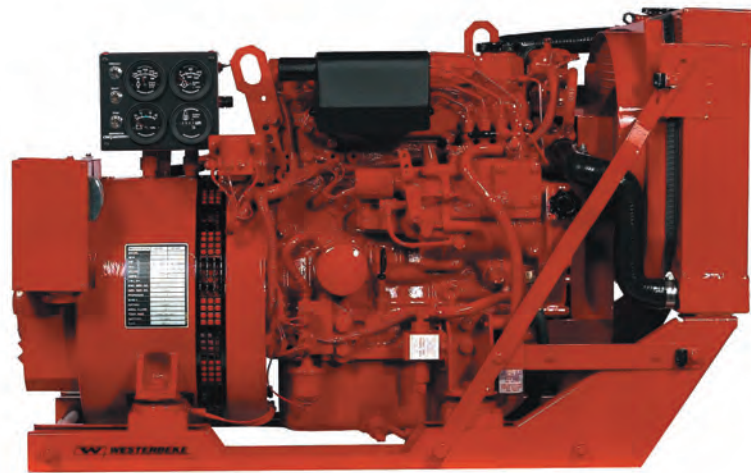
Years of Sea Duty brings Unmatched Reliability On-Shore

## Westerbeke

The marine pioneer in lightweight diesel generators, Westerbeke is today's choice for "The right product" in dependable mobile power applications. Offshore marine dependability is now available onshore for today's electric and electronic needs. Long the leader in quality, innovation and custom features, Westerbeke continues its leadership role from its world headquarters and plant in Taunton, MA, USA.

## Easy Starting and Custom Options

"GenRemote" – multi station remote controls allow Westerbeke generators to "start on the run" for "Search and Roll" with one touch start, no need to stop to start. Only Westerbeke and XRT® offer "Combi" the ultimate combination of both electric and hydraulic rescue power in a space saving diesel power plant. Add more onboard DC output with "DC-Plus" and Westerbeke.



15.0 BTDCR

## Full Range–Full Feature

Westerbeke offers a full range of liquid cooled, 1800 RPM diesel generators. Ratings from a mini 5.5 to a husky 15.0kW (5.0–12.0kW@1500RPM), Westerbeke offers the smallest, lightest diesel generators in the mobile market. All Westerbeke generators feature self priming fuel systems and full instruments at the start panel.

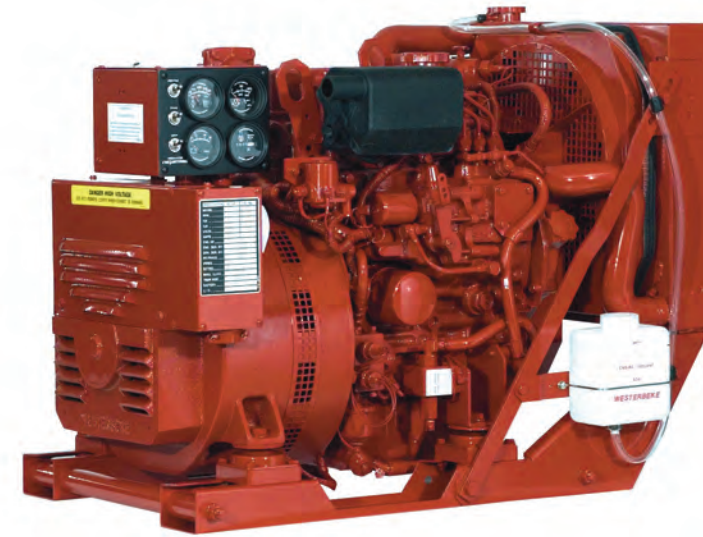
## Quiet, Compact and Easy to Service

Westerbeke generators run quiet, are easy to install and economical to operate. All Westerbeke generators offer the ease of single side service, protection of automatic safety shutdowns and the reliability of all weather starting.

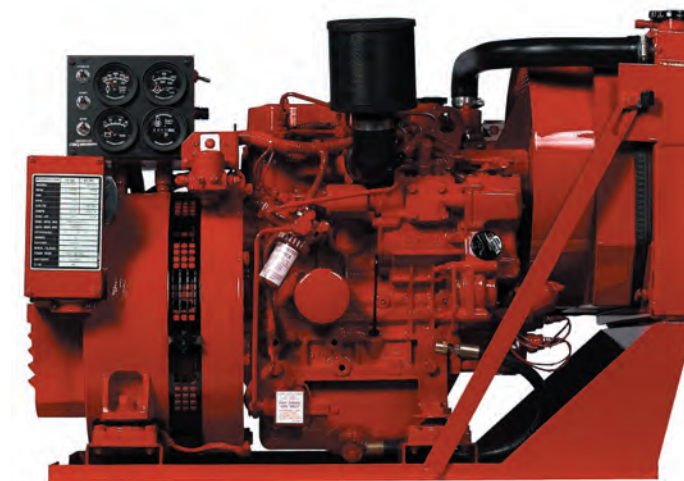


## Clean Machines

Westerbeke generators produce clean, stable electricity with electronic voltage regulating and engine speed governing on mid and large size generators. Westerbeke meets all current EPA and CARB exhaust emission regulations so all our generators are clean running, environmentally friendly machines.



8.0 BTDA



Westerbeke 7.6 BTDR

## Each Westerbeke Diesel Generator Set Offers these Benefits:

- Compact lightweight design
- Quiet
  - Runs at 1800 RPM (60 Hz) or 1500 RPM (50 Hz)
  - Tuned air intake silencer
- Frequency regulation to .5 Hz (.6%) with electronic governing
- Built-in power take off capable of full engine torque
- Optimum vibration isolation
- Multi-station remote starting capability
- User-friendly trouble-free controls
- Easy-to-read operator's manual and parts list
- Emergency stop switch
- Steel mounting skid
- Electronic governing
  - Optional: All models (Standard on 11.0/8.9 BTDR only)
- Electronic voltage regulation
  - Optional: 10.0/7.5 BTDA–15.0/12.0 BTDCR

## Each Westerbeke Engine Includes these Standard Features:

- Low maintenance costs
- Low fuel consumption
- Self-bleeding fuel system
- Easy one-side servicing
- Water-cooled cast iron block for a longer life
- Cooling designed for high ambient temperatures
- 12 volt starter motor
- 12 volt 50 ampere alternator (7.6/5.7 BTDR–15.0/12.0 BTDCR)
- Full engine instrumentation
  - Water temperature
  - Oil pressure
  - Hour meter
  - DC voltmeter
- Safety shutdowns
  - High water temperature
  - Low oil pressure
- Glow plugs for cold weather starting
- Electric fuel pump
- Built-in lube oil drain hose
- Dry element air filter
- Full flow lube oil filter
- Coolant overflow kit

## Each Westerbeke Generator Includes these Standard Features:

- Compact lightweight design
- Brushless-revolving field
- Single or three phase (10.0/7.5 BTDA–15.0/12.5 BTDCR)
- Class H insulation
- Conforms to NMEA temperature rise standards
- Easy field conversion
  - 60 HZ or 50 HZ AC output