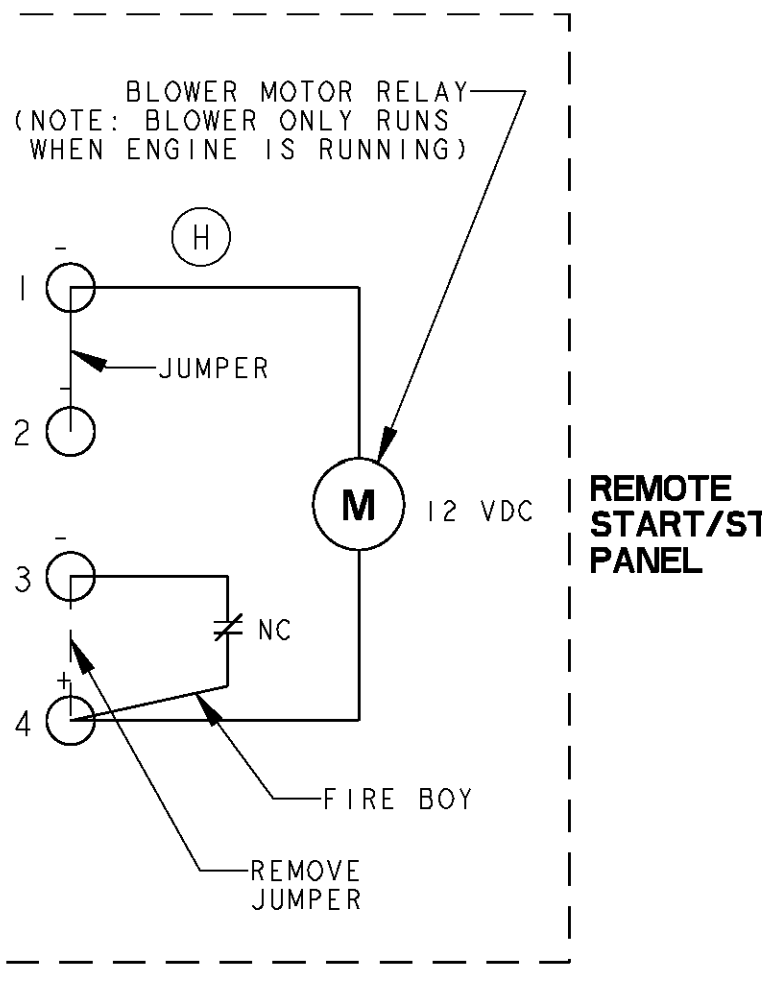
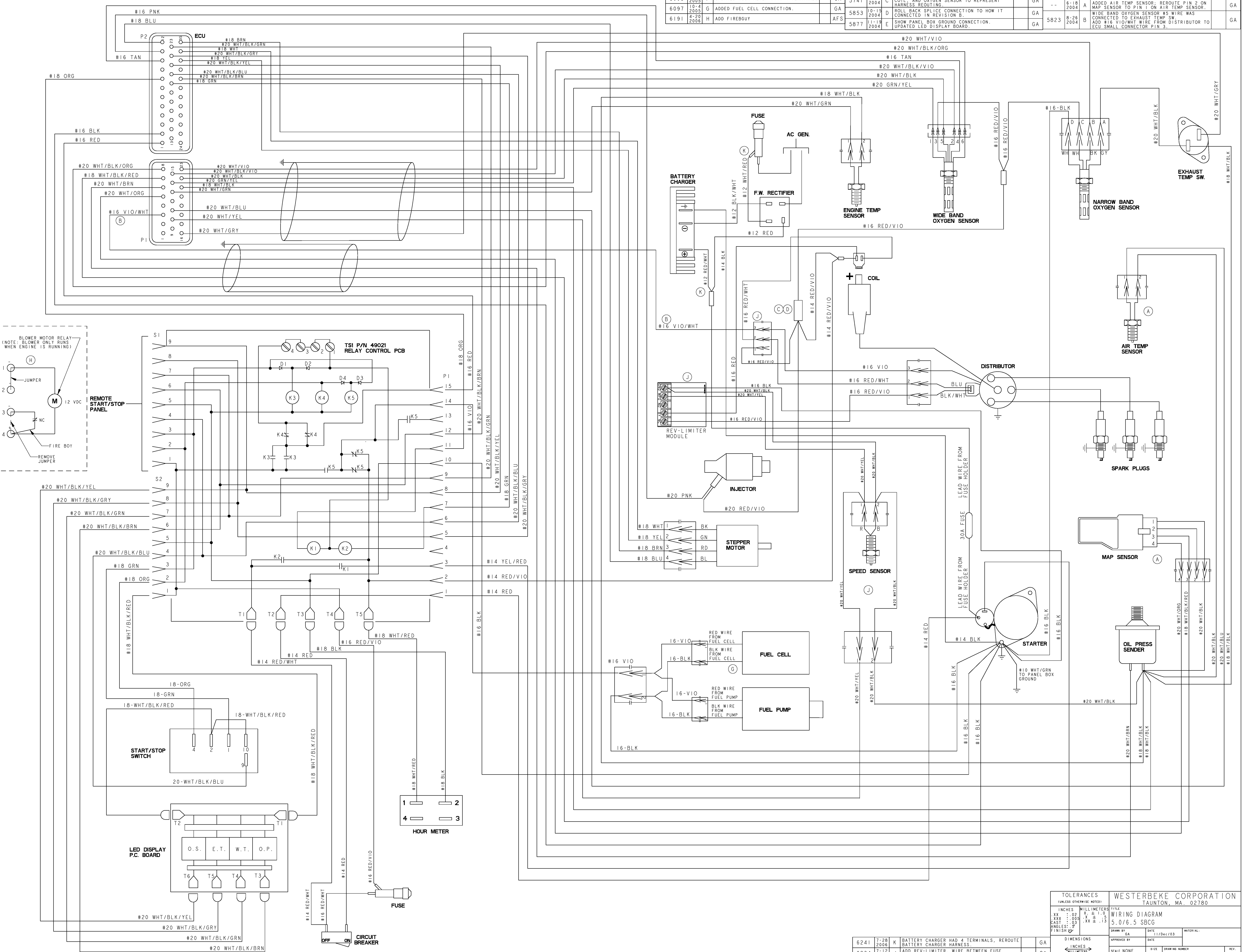


ECO NO.	DATE	REV.	DESCRIPTION	AUTH.	DR. BY
5908	1-7-2005	F	UPDATED HOUR METER WITH 4 TERMINALS.	GA	5741
6097	10-4-2005	G	ADDED FUEL CELL CONNECTION.	GA	5853
6191	4-20-2006	H	ADD FIREBURY	AFS	5877
			REDRAW SPLICE CONNECTION FOR INJECTOR, COIL, AND OXYGEN SENSOR TO REPRESENT HARNESS ROUTING.	GA	5741
			ROLL BACK SPLICE CONNECTION TO HOW IT CONNECTED IN REVISION B.	GA	5853
			SHOW PANEL BOX GROUND CONNECTION. UPDATED LED DISPLAY BOARD.	GA	5877

ECO NO.	DATE	REV.	DESCRIPTION	AUTH.	DR. BY
5823	6-18-2004	A	ADDED AIR TEMP SENSOR; REROUTE PIN 2 ON MAP SENSOR TO PIN 1 ON AIR TEMP SENSOR.	GA	
	8-26-2004	B	WIDE BAND OXYGEN SENSOR #5 WIRE WAS CONNECTED TO EXHAUST TEMP SW. ADD #16 VIO/WHT WIRE FROM DISTRIBUTOR TO ECU SMALL CONNECTOR PIN 3.	GA	



TOLERANCES (UNLESS OTHERWISE NOTED)		WESTERBEKE CORPORATION TAUNTON, MA. 02780	
INCHES	MILLIMETERS	TITLE	DATE
.XX	±.00	WIRING DIAGRAM	11/Dec/03
.XX	±.00	SCALE NONE	SIZE
CAST	±.00	5.0/6.5 SBCG	DRAWING NUMBER
ANGLES	±.03		REV.
FINISH			E

ECO NO.	DATE	REV.	DESCRIPTION	AUTH.	DR. BY
6241	7-28-2006	K	BATTERY CHARGER HAD 4 TERMINALS. REROUTE BATTERY CHARGER HARNESS.	GA	
6234	7-12-2006	J	ADD REV-LIMITER WIRE BETWEEN FUSE AND RECTIFIER WAS #14 WHT/RED.	GA	

49166