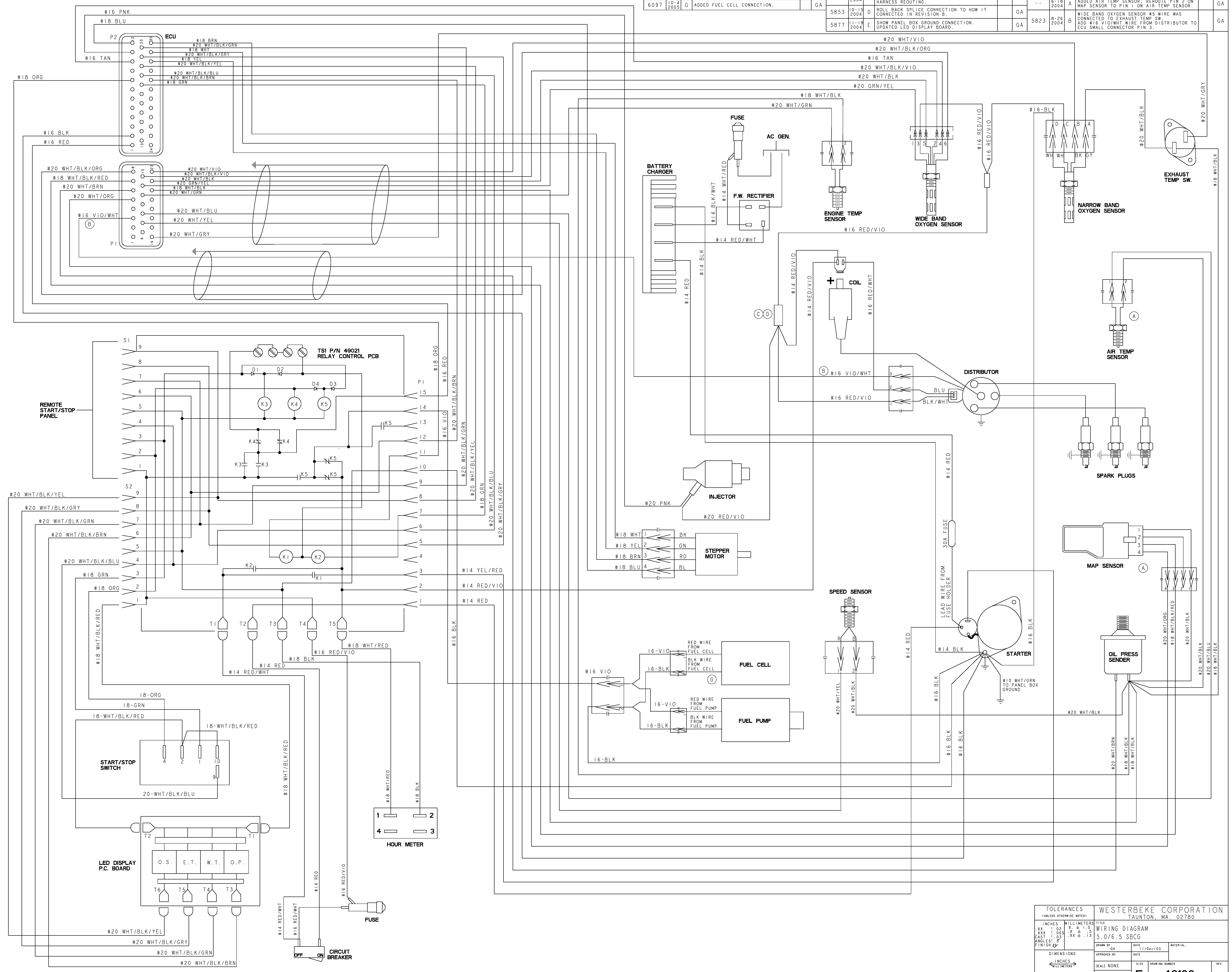


5908	1-7-2005	F	UPDATED HOUR METER WITH 4 TERMINALS	GA	5741	10-5-2004	C	REDRAW SPILCE CONNECTION FOR INJECTOR, COIL, AND OXYGEN SENSOR TO REPRESENT HARNESS ROUTING.	GA	ECO NO.	DATE	REV.	REVISION RECORD	AUTH.	DR. BY
6097	10-4-2005	G	ADDED FUEL CELL CONNECTION.	GA	5853	10-15-2004	D	ROLL BACK SPILCE CONNECTION TO HOW IT CONNECTED IN REVISION B.	GA	--	6-18-2004	A	ADDED AIR TEMP SENSOR; REROUTE PIN 2 ON MAP SENSOR TO PIN 1 ON AIR TEMP SENSOR.	GA	
					5877	11-18-2004	E	SHOW PANEL BOX GROUND CONNECTION. UPDATED LED DISPLAY BOARD.	GA	5823	8-26-2004	B	WIDE BAND OXYGEN SENSOR #5 WIRE WAS CONNECTED TO EXHAUST TEMP SW. ADD #16 VIO/WHT WIRE FROM DISTRIBUTOR TO ECU SMALL CONNECTOR PIN 3.	GA	



TOLERANCES (UNLESS OTHERWISE NOTED)		WESTERBEKE CORPORATION TAUNTON, MA. 02780	
INCHES	MILLIMETERS	TITLE	DATE
.XX	.00	WIRING DIAGRAM	11/Dec/03
.XX	.00	SCALE NONE	DATE
CAST	.00	SIZE	DRAWING NUMBER
FINISH	.03	SCALE NONE	49166
DIMENSIONS (WHEN APPLICABLE)		REV.	
SHT. 1 OF 1		E	